

## Thalidomide-NH-C10-NH2 hydrochloride

## Chemical Properties

CAS No. : 2460022-53-9

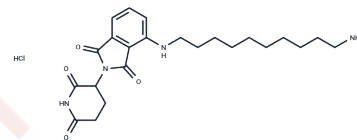
Formula: C<sub>23</sub>H<sub>33</sub>ClN<sub>4</sub>O<sub>4</sub>

Molecular Weight: 464.99

Keep away from direct sunlight

Storage: Powder: -20°C for 3 years | In solvent: -80°C for 1 year

Actual storage temperature shall be subject to the COA.



## Biological Description

Description	Thalidomide-NH-C10-NH2 hydrochloride, a thalidomide-derived cereblon ligand, facilitates CRBN protein recruitment and, when conjugated with a linker, forms PROTACs [1].
Targets(IC50)	Others,Ligands for E3 Ligase

## Preparing Stock Solutions

	1mg	5mg	10mg
1 mM	2.1506 mL	10.7529 mL	21.5058 mL
5 mM	0.4301 mL	2.1506 mL	4.3012 mL
10 mM	0.2151 mL	1.0753 mL	2.1506 mL
50 mM	0.043 mL	0.2151 mL	0.4301 mL

Please select the appropriate solvent to prepare the stock solution, according to the solubility of the product in different solvents. Please use it as soon as possible.

Note: The dilution table applies only to solid products. For liquid products, please calculate the stock solution based on the stated concentration and/or density.

Inhibitor · Natural Compounds · Compound Libraries · Recombinant Proteins

This product is for Research Use Only · Not for Human or Veterinary or Therapeutic Use

Tel:781-999-4286

E\_mail:info@targetmol.com

Address:34 Washington Street,Wellesley Hills,MA 02481