

## Amino-Tri-(carboxyethoxymethyl)-methane hydrochloride

## Chemical Properties

CAS No. : 1416771-72-6

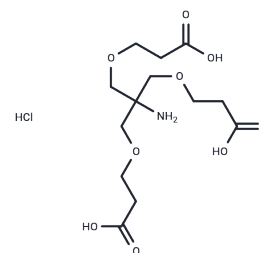
Formula: C<sub>13</sub>H<sub>24</sub>ClNO<sub>9</sub>

Molecular Weight: 373.78

Keep away from direct sunlight

Storage: Powder: -20°C for 3 years | In solvent: -80°C for 1 year

Actual storage temperature shall be subject to the COA.



## Biological Description

Description	Amino-Tri-(carboxyethoxymethyl)-methane hydrochloride is a cleavable PEG-based linker used in the synthesis of antibody-drug conjugates (ADCs) and as a PEG-based PROTAC linker for PROTACs synthesis, as documented in references [1] [2].
Targets(IC50)	ADC Linker,PROTAC Linker
In vitro	Antibody-drug conjugates (ADCs) consist of an antibody linked to a cytotoxic agent (ADC cytotoxin) via a chemical bridge (ADC linker) [1]. Proteolysis-targeting chimeras (PROTACs) are bifunctional molecules that harness an E3 ubiquitin ligase ligand and a ligand for the protein of interest, connected by a linker; they leverage the cell's ubiquitin-proteasome system for the selective degradation of specific proteins [2].

## Preparing Stock Solutions

	1mg	5mg	10mg
1 mM	2.6754 mL	13.3769 mL	26.7537 mL
5 mM	0.5351 mL	2.6754 mL	5.3507 mL
10 mM	0.2675 mL	1.3377 mL	2.6754 mL
50 mM	0.0535 mL	0.2675 mL	0.5351 mL

Please select the appropriate solvent to prepare the stock solution, according to the solubility of the product in different solvents. Please use it as soon as possible.

Note: The dilution table applies only to solid products. For liquid products, please calculate the stock solution based on the stated concentration and/or density.

Inhibitor · Natural Compounds · Compound Libraries · Recombinant Proteins

This product is for Research Use Only · Not for Human or Veterinary or Therapeutic Use

Tel:781-999-4286

E\_mail:info@targetmol.com

Address:34 Washington Street,Wellesley Hills,MA 02481