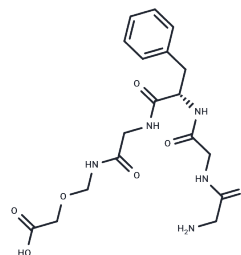


Gly-Gly-Phe-Gly-NH-CH₂-O-CH₂COOH

Chemical Properties

CAS No. : 1599440-20-6
 Formula: C₁₈H₂₅N₅O₇
 Molecular Weight: 423.42
 Storage: Powder: -20°C for 3 years | In solvent: -80°C for 1 year
 Actual storage temperature shall be subject to the COA.



Biological Description

Description	Gly-Gly-Phe-Gly-NH-CH ₂ -O-CH ₂ COOH is an ADC linker used in synthesizing drug-linker conjugates for ADCs, particularly for the creation of Deruxtecan, a potent drug-linker conjugate [1].
Targets(IC50)	ADC Linker

Preparing Stock Solutions

	1mg	5mg	10mg
1 mM	2.3617 mL	11.8086 mL	23.6172 mL
5 mM	0.4723 mL	2.3617 mL	4.7234 mL
10 mM	0.2362 mL	1.1809 mL	2.3617 mL
50 mM	0.0472 mL	0.2362 mL	0.4723 mL

Please select the appropriate solvent to prepare the stock solution, according to the solubility of the product in different solvents. Please use it as soon as possible.

Note: The dilution table applies only to solid products. For liquid products, please calculate the stock solution based on the stated concentration and/or density.

Inhibitor · Natural Compounds · Compound Libraries · Recombinant Proteins

This product is for Research Use Only · Not for Human or Veterinary or Therapeutic Use

Tel: 781-999-4286 E_mail: info@targetmol.com Address: 34 Washington Street, Wellesley Hills, MA 02481