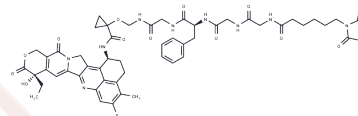


## MC-Gly-Gly-Phe-Gly-amide-cyclopropanol-amide-Exatecan

## Chemical Properties

CAS No. :	2414254-41-2
Formula:	C54H58FN9O13
Molecular Weight:	1060.09
Storage:	Powder: -20°C for 3 years   In solvent: -80°C for 1 year Actual storage temperature shall be subject to the COA.



## Biological Description

Description	MC-Gly-Gly-Phe-Gly-amide-cyclopropanol-amide-Exatecan is an antibody-drug conjugate (ADC)[1].
Targets(IC50)	Drug-Linker Conjugates for ADC,Topoisomerase

## Preparing Stock Solutions

	1mg	5mg	10mg
1 mM	0.9433 mL	4.7166 mL	9.4332 mL
5 mM	0.1887 mL	0.9433 mL	1.8866 mL
10 mM	0.0943 mL	0.4717 mL	0.9433 mL
50 mM	0.0189 mL	0.0943 mL	0.1887 mL

Please select the appropriate solvent to prepare the stock solution, according to the solubility of the product in different solvents. Please use it as soon as possible.

Note: The dilution table applies only to solid products. For liquid products, please calculate the stock solution based on the stated concentration and/or density.

Inhibitor · Natural Compounds · Compound Libraries · Recombinant Proteins

This product is for Research Use Only · Not for Human or Veterinary or Therapeutic Use

Tel:781-999-4286 E\_mail:info@targetmol.com Address:34 Washington Street,Wellesley Hills,MA 02481