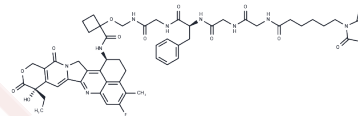


MC-Gly-Gly-Phe-Gly-Cyclobutanecarboxylic-Exatecan

Chemical Properties

CAS No. : 2414393-22-7
 Formula: C55H60FN9O13
 Molecular Weight: 1074.12
 Storage: Powder: -20°C for 3 years | In solvent: -80°C for 1 year
 Actual storage temperature shall be subject to the COA.



Biological Description

Description	MC-Gly-Gly-Phe-Gly-Cyclobutanecarboxylic-Exatecan is an agent-linker conjugate designed for antibody-drug conjugate (ADC) applications, comprised of an ADC linker (MC-Gly-Gly-Phe-Gly-Cyclobutanecarboxylic acid) and the DNA topoisomerase I inhibitor, Exatecan. This conjugate is utilized in cancer research [1].
Targets(IC50)	Drug-Linker Conjugates for ADC,Topoisomerase

Preparing Stock Solutions

	1mg	5mg	10mg
1 mM	0.931 mL	4.655 mL	9.3099 mL
5 mM	0.1862 mL	0.931 mL	1.862 mL
10 mM	0.0931 mL	0.4655 mL	0.931 mL
50 mM	0.0186 mL	0.0931 mL	0.1862 mL

Please select the appropriate solvent to prepare the stock solution, according to the solubility of the product in different solvents. Please use it as soon as possible.

Note: The dilution table applies only to solid products. For liquid products, please calculate the stock solution based on the stated concentration and/or density.

Inhibitor · Natural Compounds · Compound Libraries · Recombinant Proteins

This product is for Research Use Only · Not for Human or Veterinary or Therapeutic Use

Tel:781-999-4286 E_mail:info@targetmol.com Address:34 Washington Street,Wellesley Hills,MA 02481