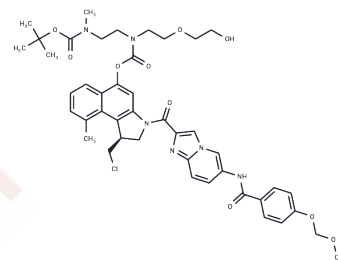


MethylCBI-azaindole-benzamide-MOM-Boc-ethylenediamine-D

Chemical Properties

CAS No. :	2222445-87-4
Formula:	C44H51ClN6O10
Molecular Weight:	859.36
Storage:	Powder: -20°C for 3 years In solvent: -80°C for 1 year Actual storage temperature shall be subject to the COA.



Biological Description

Description	MethylCBI-azaindole-benzamide-MOM-Boc-ethylenediamine-D is a cleavable linker used in the formation of antibody-drug conjugates (ADCs), enabling the release of the cytotoxic drug upon internalization by target cells [1].
Targets(IC50)	ADC Linker
In vitro	ADCs consist of an antibody linked to a cytotoxic agent (ADC cytotoxin) via a chemical connector (ADC linker) [1].

Preparing Stock Solutions

	1mg	5mg	10mg
1 mM	1.1637 mL	5.8183 mL	11.6366 mL
5 mM	0.2327 mL	1.1637 mL	2.3273 mL
10 mM	0.1164 mL	0.5818 mL	1.1637 mL
50 mM	0.0233 mL	0.1164 mL	0.2327 mL

Please select the appropriate solvent to prepare the stock solution, according to the solubility of the product in different solvents. Please use it as soon as possible.

Note: The dilution table applies only to solid products. For liquid products, please calculate the stock solution based on the stated concentration and/or density.

Inhibitor · Natural Compounds · Compound Libraries · Recombinant Proteins

This product is for Research Use Only · Not for Human or Veterinary or Therapeutic Use

Tel:781-999-4286 E_mail:info@targetmol.com Address:34 Washington Street,Wellesley Hills,MA 02481