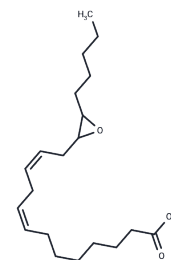


(±)14(15)-EpEDE**Chemical Properties**

CAS No. : 351533-80-7
 Formula: C₂₀H₃₄O₃
 Molecular Weight: 322.489
 Storage: Powder: -20°C for 3 years | In solvent: -80°C for 1 year
 Actual storage temperature shall be subject to the COA.

**Biological Description**

Description	8,11,14-Eicosatrienoic acid, also known as dihomo- γ -linolenic acid, is a polyunsaturated fatty acid (PUFA) produced from γ -linolenic acid by the action of fatty acid elongases. It can be metabolized by the cyclooxygenase pathway to produce 1-series prostaglandins (PGs) (e.g., PGE ₁). (±)14(15)-EpEDE is an EpEDE acid formed from 8,11,14-eicosatrienoic acid. This monoepoxide can be generated from the PUFA, in vitro, by the action of a strong oxidizing agent. Alternatively, this compound may be produced, in vivo, by epoxidation of the PUFA by cytochrome P450 epoxygenases. The biological properties of this compound are poorly understood.
Targets(IC ₅₀)	Others,Endogenous Metabolite

Solubility Information

Solubility	DMF: 30 mg/mL (93.03 mM),Sonication is recommended. Ethanol: 20 mg/mL (62.02 mM),Sonication is recommended. DMSO: 30 mg/mL (93.03 mM),Sonication is recommended. DMSO:PBS(pH7.2) (1:1): 0.5 mg/mL (1.55 mM),Sonication is recommended. (< 1 mg/ml refers to the product slightly soluble or insoluble)
------------	--

Preparing Stock Solutions

	1mg	5mg	10mg
1 mM	3.1009 mL	15.5044 mL	31.0087 mL
5 mM	0.6202 mL	3.1009 mL	6.2017 mL
10 mM	0.3101 mL	1.5504 mL	3.1009 mL
50 mM	0.062 mL	0.3101 mL	0.6202 mL

Please select the appropriate solvent to prepare the stock solution, according to the solubility of the product in different solvents. Please use it as soon as possible.

Note: The dilution table applies only to solid products. For liquid products, please calculate the stock solution based on the stated concentration and/or density.

Inhibitor · Natural Compounds · Compound Libraries · Recombinant Proteins

This product is for Research Use Only · Not for Human or Veterinary or Therapeutic Use

Tel:781-999-4286 E_mail:info@targetmol.com Address:34 Washington Street,Wellesley Hills,MA 02481