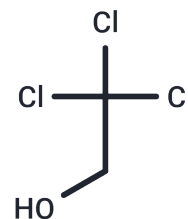


2,2,2-Trichloroethanol

Chemical Properties

CAS No. :	115-20-8
Formula:	C ₂ H ₃ Cl ₃ O
Molecular Weight:	149.4
Storage:	Powder: -20°C for 3 years In solvent: -80°C for 1 year <i>Actual storage temperature shall be subject to the COA.</i>



Biological Description

Description	2,2,2-Trichloroethanol, the active form of the sedative hypnotic drug chloral hydrate, is an agonist for the nonclassical K ₂ P channels TREK-1 (KCNK2) and TRAAK (KCNK4). It activates a nonclassical potassium channel in cerebrovascular smooth muscle and dilates the middle cerebral artery [1]. [1]. Nikhil K Parelkar, et al. 2,2,2-trichloroethanol Activates a Nonclassical Potassium Channel in Cerebrovascular Smooth Muscle and Dilates the Middle Cerebral Artery. J Pharmacol Exp Ther. 2010 Mar;332(3):803-10.
Targets(IC50)	Endogenous Metabolite,Potassium Channel
In vitro	2,2,2-trichloroethanol dilated the middle cerebral artery and activated the potassium channel in cerebrovascular smooth muscle[1].

Solubility Information

Solubility	DMSO: 55 mg/mL (368.14 mM),Sonication is recommended. (< 1 mg/ml refers to the product slightly soluble or insoluble)
In vivo Formulation	10% DMSO+40% PEG300+5% Tween 80+45% Saline: 2 mg/mL (13.39 mM),Sonication is recommended. <i>Please add the solvents sequentially, clarifying the solution as much as possible before adding the next one. Dissolve by heating and/or sonication if necessary. Working solution is recommended to be prepared and used immediately. The formulation provided above is for reference purposes only. In vivo formulations may vary and should be modified based on specific experimental conditions.</i>

Preparing Stock Solutions

	1mg	5mg	10mg
1 mM	6.6934 mL	33.4672 mL	66.9344 mL
5 mM	1.3387 mL	6.6934 mL	13.3869 mL
10 mM	0.6693 mL	3.3467 mL	6.6934 mL
50 mM	0.1339 mL	0.6693 mL	1.3387 mL

Please select the appropriate solvent to prepare the stock solution, according to the solubility of the product in different solvents. Please use it as soon as possible.

Note: The dilution table applies only to solid products. For liquid products, please calculate the stock solution based on the stated concentration and/or density.

Reference

Nikhil K Parelkar , et al. 2,2,2-trichloroethanol Activates a Nonclassical Potassium Channel in Cerebrovascular Smooth Muscle and Dilates the Middle Cerebral Artery. *J Pharmacol Exp Ther.* 2010 Mar;332(3):803-10.

Inhibitor · Natural Compounds · Compound Libraries · Recombinant Proteins

This product is for Research Use Only · Not for Human or Veterinary or Therapeutic Use

Tel:781-999-4286 E_mail:info@targetmol.com Address:34 Washington Street,Wellesley Hills,MA 02481