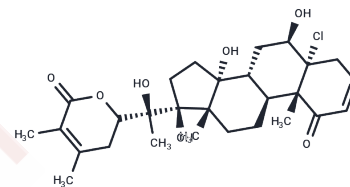


## Withanolide C

## Chemical Properties

|                   |   |
|-------------------|---|
| CAS No. :         | 108030-78-0   |
| Formula:          | C <sub>28</sub> H <sub>39</sub> ClO <sub>7</sub>  |
| Molecular Weight: | 523.06  |
| Storage:          | Powder: -20°C for 3 years   In solvent: -80°C for 1 year<br>Actual storage temperature shall be subject to the COA. |



## Biological Description

|               |  |
|---------------|--|
| Description   | Withanolide C is a natural product from Physali alkekengi. |
| Targets(IC50) | Others   |

## Preparing Stock Solutions

|       | 1mg       | 5mg       | 10mg       |
|-------|-----------|-----------|------------|
| 1 mM  | 1.9118 mL | 9.5591 mL | 19.1183 mL |
| 5 mM  | 0.3824 mL | 1.9118 mL | 3.8237 mL  |
| 10 mM | 0.1912 mL | 0.9559 mL | 1.9118 mL  |
| 50 mM | 0.0382 mL | 0.1912 mL | 0.3824 mL  |

Please select the appropriate solvent to prepare the stock solution, according to the solubility of the product in different solvents. Please use it as soon as possible.

Note: The dilution table applies only to solid products. For liquid products, please calculate the stock solution based on the stated concentration and/or density.

**Inhibitor · Natural Compounds · Compound Libraries · Recombinant Proteins**

This product is for Research Use Only · Not for Human or Veterinary or Therapeutic Use

Tel:781-999-4286 E\_mail:info@targetmol.com Address:34 Washington Street,Wellesley Hills,MA 02481