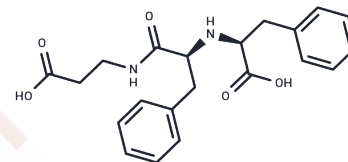


Sch 32615

Chemical Properties

CAS No. : 83861-02-3
 Formula: C₂₁H₂₄N₂O₅
 Molecular Weight: 384.43
 Storage: Powder: -20°C for 3 years | In solvent: -80°C for 1 year
 Actual storage temperature shall be subject to the COA.



Biological Description

Description	Sch 32615 is an enkephalinase inhibitor with inhibitory action on D-1 and D-2 dopamine receptor-mediated behaviors.
Targets(IC50)	Neprilysin,Others

Preparing Stock Solutions

	1mg	5mg	10mg
1 mM	2.6013 mL	13.0063 mL	26.0125 mL
5 mM	0.5203 mL	2.6013 mL	5.2025 mL
10 mM	0.2601 mL	1.3006 mL	2.6013 mL
50 mM	0.052 mL	0.2601 mL	0.5203 mL

Please select the appropriate solvent to prepare the stock solution, according to the solubility of the product in different solvents. Please use it as soon as possible.

Note: The dilution table applies only to solid products. For liquid products, please calculate the stock solution based on the stated concentration and/or density.

Reference

- Marin C, Chase TN. Effects of SCH 32615, an enkephalinase inhibitor, on D-1 and D-2 dopamine receptor-mediated behaviors. *Neuropharmacology*. 1995 Jun;34(6):677-82. PubMed PMID: 7566505.
- Jayaram A, Singh P, Carp HM. An enkephalinase inhibitor, SCH 32615, augments analgesia induced by surgery in mice. *Anesthesiology*. 1995 May;82(5):1283-7. PubMed PMID: 7741304.
- Jayaram A, Singh P, Carp H. SCH 32615, an enkephalinase inhibitor, enhances pregnancy-induced analgesia in mice. *Anesth Analg*. 1995 May;80(5):944-8. PubMed PMID: 7726437.
- Coombs DW, Colburn RW, DeLeo JA, Hoopes PJ, Rhodes CH, Twitchell BB. Acute toxicology of an enkephalinase inhibitor (SCH 32615) given intrathecally in the ewe. *Anesth Analg*. 1993 Jan;76(1):123-30. PubMed PMID: 8418713.

Inhibitor · Natural Compounds · Compound Libraries · Recombinant Proteins

This product is for Research Use Only · Not for Human or Veterinary or Therapeutic Use

Tel:781-999-4286 E_mail:info@targetmol.com Address:34 Washington Street,Wellesley Hills,MA 02481