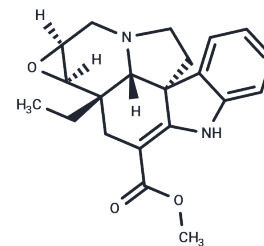


Lochnericine

Chemical Properties

CAS No. :	72058-36-7
Formula:	C ₂₁ H ₂₄ N ₂ O ₃
Molecular Weight:	352.434
Storage:	Powder: -20°C for 3 years In solvent: -80°C for 1 year Actual storage temperature shall be subject to the COA.



Biological Description

Description	Lochnericine is a alkaloid isolated from elicited cell cultures of <i>Catharanthus roseus</i> .
Targets(IC50)	Others

Preparing Stock Solutions

	1mg	5mg	10mg
1 mM	2.8374 mL	14.1872 mL	28.3744 mL
5 mM	0.5675 mL	2.8374 mL	5.6749 mL
10 mM	0.2837 mL	1.4187 mL	2.8374 mL
50 mM	0.0567 mL	0.2837 mL	0.5675 mL

Please select the appropriate solvent to prepare the stock solution, according to the solubility of the product in different solvents. Please use it as soon as possible.

Note: The dilution table applies only to solid products. For liquid products, please calculate the stock solution based on the stated concentration and/or density.

Reference

Wang Q, He J, Yan J, Wu D, Li H. Spectroscopy and docking simulations of the interaction between lochnericine and bovine serum albumin. *Luminescence*. 2015 Mar;30(2):240-6. doi: 10.1002/bio.2724. Epub 2014 Jun 19. PubMed PMID: 24942935.

GORMAN M, NEUSS N, SVOBODA GH, BARNES AJ Jr, CONE NJ. A note on the alkaloids of *Vinca rosea* Linn. (*Catharanthus roseus* G. Don.). II. Catharanthine, lochnericine, vindolinine, and vindoline. *J Am Pharm Assoc Am Pharm Assoc*. 1959 Apr;48(4):256-7. PubMed PMID: 13641069.

Tikhomiroff C, Allais S, Klvana M, Hisiger S, Jolicoeur M. Continuous selective extraction of secondary metabolites from *Catharanthus roseus* hairy roots with silicon oil in a two-liquid-phase bioreactor. *Biotechnol Prog*. 2002 Sep-Oct;18(5):1003-9. PubMed PMID: 12363351.

Rijhwani SK, Shanks JV. Effect of elicitor dosage and exposure time on biosynthesis of indole alkaloids by *Catharanthus roseus* hairy root cultures. *Biotechnol Prog*. 1998 May-Jun;14(3):442-9. PubMed PMID: 9622525.

Inhibitor · Natural Compounds · Compound Libraries · Recombinant Proteins

This product is for Research Use Only · Not for Human or Veterinary or Therapeutic Use

Tel:781-999-4286 E_mail:info@targetmol.com Address:34 Washington Street,Wellesley Hills,MA 02481