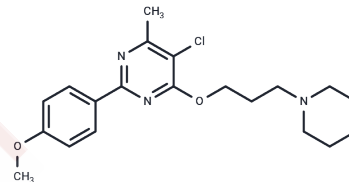


## Sigma-1 receptor antagonist 2

## Chemical Properties

CAS No. :	1639220-15-7
Formula:	C <sub>20</sub> H <sub>26</sub> ClN <sub>3</sub> O <sub>2</sub>
Molecular Weight:	375.89
Storage:	Powder: -20°C for 3 years   In solvent: -80°C for 1 year Actual storage temperature shall be subject to the COA.



## Biological Description

Description	Sigma-1 receptor antagonist 2 is a more potent and selective antagonist of the sigma-1 receptor ( $\sigma_1$ R, $K_i = 3.88$ nM) compared to the sigma-2 receptor ( $K_i = 1288$ nM).
Targets(IC50)	Sigma receptor

## Solubility Information

Solubility	DMSO: 86.67 mg/mL (230.57 mM), Sonication is recommended. ( $< 1$ mg/ml refers to the product slightly soluble or insoluble)
In vivo Formulation	10% DMSO+40% PEG300+5% Tween 80+45% Saline: 3.3 mg/mL (8.78 mM), Sonication is recommended. <i>Please add the solvents sequentially, clarifying the solution as much as possible before adding the next one. Dissolve by heating and/or sonication if necessary. Working solution is recommended to be prepared and used immediately. The formulation provided above is for reference purposes only. In vivo formulations may vary and should be modified based on specific experimental conditions.</i>

## Preparing Stock Solutions

	1mg	5mg	10mg
1 mM	2.6604 mL	13.3018 mL	26.6035 mL
5 mM	0.5321 mL	2.6604 mL	5.3207 mL
10 mM	0.266 mL	1.3302 mL	2.6604 mL
50 mM	0.0532 mL	0.266 mL	0.5321 mL

Please select the appropriate solvent to prepare the stock solution, according to the solubility of the product in different solvents. Please use it as soon as possible.

Note: The dilution table applies only to solid products. For liquid products, please calculate the stock solution based on the stated concentration and/or density.

Reference

Lan Y, et al. Synthesis and biological evaluation of novel sigma-1 receptor antagonists based on pyrimidine scaffold as agents for treating neuropathic pain. J Med Chem. 2014 Dec 26;57(24):10404-23.

**Inhibitor · Natural Compounds · Compound Libraries · Recombinant Proteins**

This product is for Research Use Only · Not for Human or Veterinary or Therapeutic Use

Tel:781-999-4286 E\_mail:info@targetmol.com Address:34 Washington Street,Wellesley Hills,MA 02481