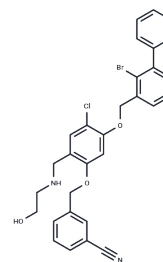


PD-1/PD-L1-IN-20

Chemical Properties

CAS No. : 2159138-01-7
 Formula: C₃₀H₂₆BrClN₂O₃
 Molecular Weight: 577.9
 Storage: Powder: -20°C for 3 years | In solvent: -80°C for 1 year
 Actual storage temperature shall be subject to the COA.



Biological Description

Description	PD-1/PD-L1-IN-20 is a small molecule inhibitor of PD-1/PD-L1 protein-protein interaction, blocking the interaction with an IC ₅₀ of 5.29 nM. PD-1/PD-L1-IN-20 can be used to study cancer, infectious diseases, and autoimmune diseases.
Targets(IC ₅₀)	PD-1/PD-L1

Preparing Stock Solutions

	1mg	5mg	10mg
1 mM	1.7304 mL	8.652 mL	17.304 mL
5 mM	0.3461 mL	1.7304 mL	3.4608 mL
10 mM	0.173 mL	0.8652 mL	1.7304 mL
50 mM	0.0346 mL	0.173 mL	0.3461 mL

Please select the appropriate solvent to prepare the stock solution, according to the solubility of the product in different solvents. Please use it as soon as possible.

Note: The dilution table applies only to solid products. For liquid products, please calculate the stock solution based on the stated concentration and/or density.

Inhibitor · Natural Compounds · Compound Libraries · Recombinant Proteins

This product is for Research Use Only · Not for Human or Veterinary or Therapeutic Use

Tel:781-999-4286 E_mail:info@targetmol.com Address:34 Washington Street,Wellesley Hills,MA 02481