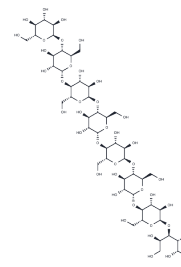


Maltooctaose

Chemical Properties

CAS No. :	66567-45-1
Formula:	C48H82O41
Molecular Weight:	1315.14
Storage:	Store at low temperature Powder: -20°C for 3 years In solvent: -80°C for 1 year <small>Actual storage temperature shall be subject to the COA.</small>



Biological Description

Description	Maltooctaose is a low molecular weight carbohydrate obtained by starch hydrolysis. It is composed of a group of linear $\alpha(1-4)$ -linked D-glucose polymers and trace amounts of (1-6)-linked glucose condensed with a degree of polymerization of 8.
Targets(IC50)	Others
In vitro	Maltooctaose is a specific length malt oligosaccharide produced by PFTA (Pyrococcus furiosus). PFTA is a very specific enzyme that opens specific cyclodextrin molecules and produces maltooligosaccharides of specific lengths, in particular malthexaose, maltheptaose, and maltooctaose. [1]

Solubility Information

Solubility	H2O: 80 mg/mL (60.83 mM), Sonication is recommended. (< 1 mg/ml refers to the product slightly soluble or insoluble)
------------	--

Preparing Stock Solutions

	1mg	5mg	10mg
1 mM	0.7604 mL	3.8019 mL	7.6038 mL
5 mM	0.1521 mL	0.7604 mL	1.5208 mL
10 mM	0.076 mL	0.3802 mL	0.7604 mL
50 mM	0.0152 mL	0.076 mL	0.1521 mL

Please select the appropriate solvent to prepare the stock solution, according to the solubility of the product in different solvents. Please use it as soon as possible.

Note: The dilution table applies only to solid products. For liquid products, please calculate the stock solution based on the stated concentration and/or density.

Reference

Yang SJ, et al. Enzymatic preparation of maltohexaose, maltoheptaose, and maltooctaose by the preferential cyclomaltooligosaccharide (cyclodextrin) ring-opening reaction of Pyrococcus furiosus thermostable amylase [published correction appears in Carbohydr Res. 2006 Jul 3;341(9):1192]. Carbohydr Res. 2006;341(3):420-424.

Inhibitor · Natural Compounds · Compound Libraries · Recombinant Proteins

This product is for Research Use Only· Not for Human or Veterinary or Therapeutic Use

Tel:781-999-4286 E_mail:info@targetmol.com Address:34 Washington Street,Wellesley Hills,MA 02481