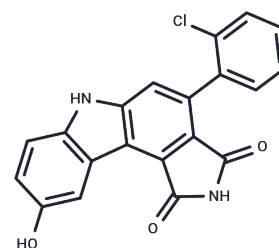


WEE1-IN-4

Chemical Properties

CAS No. : 622855-37-2
 Formula: C₂₀H₁₁ClN₂O₃
 Molecular Weight: 362.77
 Storage: Powder: -20°C for 3 years | In solvent: -80°C for 1 year
 Actual storage temperature shall be subject to the COA.



Biological Description

Description	Wee1 Inhibitor I is an ATP-binding site-targeting Wee1 inhibitor.
Targets(IC50)	Others,Wee1

Preparing Stock Solutions

	1mg	5mg	10mg
1 mM	2.7566 mL	13.7828 mL	27.5657 mL
5 mM	0.5513 mL	2.7566 mL	5.5131 mL
10 mM	0.2757 mL	1.3783 mL	2.7566 mL
50 mM	0.0551 mL	0.2757 mL	0.5513 mL

Please select the appropriate solvent to prepare the stock solution, according to the solubility of the product in different solvents. Please use it as soon as possible.

Note: The dilution table applies only to solid products. For liquid products, please calculate the stock solution based on the stated concentration and/or density.

Reference

Schmidt M, Rohe A, Platzer C, Najjar A, Erdmann F, Sippl W. Regulation of G2/M Transition by Inhibition of WEE1 and PKMYT1 Kinases. *Molecules*. 2017 Nov 23;22(12). pii: E2045. doi: 10.3390/molecules22122045. Review. PubMed PMID: 29168755.

Mills CC, Kolb EA, Sampson VB. Recent Advances of Cell-Cycle Inhibitor Therapies for Pediatric Cancer. *Cancer Res*. 2017 Dec 1;77(23):6489-6498. doi: 10.1158/0008-5472.CAN-17-2066. Epub 2017 Nov 2. Review. PubMed PMID: 29097609; PubMed Central PMCID: PMC5712276.

Brandsma I, Fleuren EDG, Williamson CT, Lord CJ. Directing the use of DDR kinase inhibitors in cancer treatment. *Expert Opin Investig Drugs*. 2017 Dec;26(12):1341-1355. doi: 10.1080/13543784.2017.1389895. Epub 2017 Oct 14. Review. PubMed PMID: 28984489.

Visconti R, Grieco D. Fighting tubulin-targeting anticancer drug toxicity and resistance. *Endocr Relat Cancer*. 2017 Sep;24(9):T107-T117. doi: 10.1530/ERC-17-0120. Review. PubMed PMID: 28808045.

Inhibitor · Natural Compounds · Compound Libraries · Recombinant Proteins

This product is for Research Use Only · Not for Human or Veterinary or Therapeutic Use

Tel:781-999-4286 E_mail:info@targetmol.com Address:34 Washington Street,Wellesley Hills,MA 02481