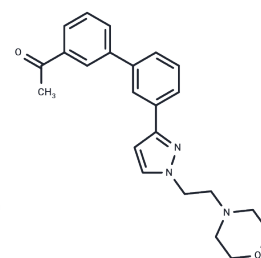


## LRH-1 Inhibitor-3

## Chemical Properties

CAS No. :	1185410-60-9
Formula:	C <sub>23</sub> H <sub>25</sub> N <sub>3</sub> O <sub>2</sub>
Molecular Weight:	375.46
Storage:	Powder: -20°C for 3 years   In solvent: -80°C for 1 year Actual storage temperature shall be subject to the COA.



## Biological Description

Description	LRH-1 Inhibitor-3 is an antagonist that inhibits LRH-1 transcriptional activity, reducing the expression of target genes associated with cell growth and proliferation, such as SHP (small heterodimer partner), cyclin E1 (CCNE1), and G0S2, and inhibiting the proliferation of human pancreatic, colon, and breast adenocarcinoma cells.
Targets(IC50)	Others,Orphan Receptor

## Preparing Stock Solutions

	1mg	5mg	10mg
1 mM	2.6634 mL	13.317 mL	26.634 mL
5 mM	0.5327 mL	2.6634 mL	5.3268 mL
10 mM	0.2663 mL	1.3317 mL	2.6634 mL
50 mM	0.0533 mL	0.2663 mL	0.5327 mL

Please select the appropriate solvent to prepare the stock solution, according to the solubility of the product in different solvents. Please use it as soon as possible.

Note: The dilution table applies only to solid products. For liquid products, please calculate the stock solution based on the stated concentration and/or density.

## Reference

- Jiang Y, et al. Regulation by FSH of the dynamic expression of retinol-binding protein 4 in the mouse ovary. *Reprod Biol Endocrinol.* 2018 Mar 20;16(1):25.
- Salmenkari H, et al. Orally administered angiotensin-converting enzyme-inhibitors captopril and isoleucine-proline-proline have distinct effects on local renin-angiotensin system and corticosterone synthesis in dextran sulfate sodium-induced colitis in mice. *J Physiol Pharmacol.* 2017 Jun;68(3):355-362.
- Yang FM, et al. A calreticulin-dependent nuclear export signal is involved in the regulation of liver receptor homologue-1 protein folding. *Biochem J.* 2015 Oct 15;471(2):199-209.
- Bianco S, Jangal M, Garneau D, Gévy N. LRH-1 controls proliferation in breast tumor cells by regulating CDKN1A gene expression. *Oncogene.* 2015 Aug 20;34(34):4509-18.

**Inhibitor · Natural Compounds · Compound Libraries · Recombinant Proteins**

This product is for Research Use Only · Not for Human or Veterinary or Therapeutic Use

Tel:781-999-4286 E\_mail:info@targetmol.com Address:34 Washington Street,Wellesley Hills,MA 02481