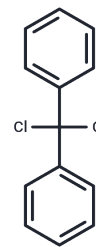


## Dichlorodiphenylmethane

## Chemical Properties

CAS No. :	2051-90-3
Formula:	C <sub>13</sub> H <sub>10</sub> Cl <sub>2</sub>
Molecular Weight:	237.12
Storage:	Powder: -20°C for 3 years   In solvent: -80°C for 1 year Actual storage temperature shall be subject to the COA.



## Biological Description

Description	Dichlorodiphenylmethane (Benzophenone dichloride) is used as pharmaceutical intermediates.
Targets(IC50)	Others

## Solubility Information

Solubility	DMSO: 55 mg/mL (231.95 mM), Sonication is recommended. (< 1 mg/ml refers to the product slightly soluble or insoluble)
------------	---

## Preparing Stock Solutions

	1mg	5mg	10mg
1 mM	4.2173 mL	21.0864 mL	42.1727 mL
5 mM	0.8435 mL	4.2173 mL	8.4345 mL
10 mM	0.4217 mL	2.1086 mL	4.2173 mL
50 mM	0.0843 mL	0.4217 mL	0.8435 mL

Please select the appropriate solvent to prepare the stock solution, according to the solubility of the product in different solvents. Please use it as soon as possible.

Note: The dilution table applies only to solid products. For liquid products, please calculate the stock solution based on the stated concentration and/or density.

## Reference

Reid TM, et al. Toxicol Lett. 1998 May; 95(3):205-10.

**Inhibitor · Natural Compounds · Compound Libraries · Recombinant Proteins**

This product is for Research Use Only · Not for Human or Veterinary or Therapeutic Use

Tel:781-999-4286 E\_mail:info@targetmol.com Address:34 Washington Street,Wellesley Hills,MA 02481