

## Gevotroline

## Chemical Properties

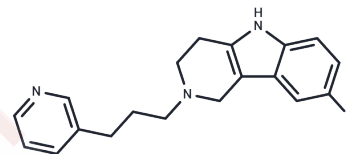
CAS No. : 107266-06-8

Formula: C<sub>19</sub>H<sub>20</sub>FN<sub>3</sub>

Molecular Weight: 309.38

Storage: Pure form: -20°C for 3 years | In solvent: -80°C for 1 year

Actual storage temperature shall be subject to the COA.



## Biological Description

Description	Gevotroline, a chemical in palm wine that can be used to treat psychosis, is a 5-HT <sub>2</sub> receptor antagonist that can be used to study behavioral disorders.
Targets(IC <sub>50</sub> )	5-HT Receptor
In vivo	During the acrophase (peak) of the effects of the circadian rhythm on the hypothalamic-pituitary-adrenal axis, the ED <sub>50</sub> was 9.6 mmol/kg for gevotroline.[1]

## Solubility Information

Solubility	DMSO: 55 mg/mL (177.77 mM), Sonication is recommended. (< 1 mg/ml refers to the product slightly soluble or insoluble)
------------	---

## Preparing Stock Solutions

	1mg	5mg	10mg
1 mM	3.2323 mL	16.1614 mL	32.3227 mL
5 mM	0.6465 mL	3.2323 mL	6.4645 mL
10 mM	0.3232 mL	1.6161 mL	3.2323 mL
50 mM	0.0646 mL	0.3232 mL	0.6465 mL

Please select the appropriate solvent to prepare the stock solution, according to the solubility of the product in different solvents. Please use it as soon as possible.

Note: The dilution table applies only to solid products. For liquid products, please calculate the stock solution based on the stated concentration and/or density.

### Reference

Matheson GK, et al. Sigma receptor ligands alter concentrations of corticosterone in plasma in the rat. *Neuropharmacology*. 1991;30(1):79-87.

Djeni TN, et al. Microbial Diversity and Metabolite Profiles of Palm Wine Produced From Three Different Palm Tree Species in Côte d'Ivoire. *Sci Rep*. 2020;10(1):1715.

Djeni TN, et al. Dynamics of microbial populations and metabolites of fermenting saps throughout tapping process of ron and oil palm trees in Côte d'Ivoire. *Front Microbiol*. 2022;13:954917.

**Inhibitor · Natural Compounds · Compound Libraries · Recombinant Proteins**

This product is for Research Use Only · Not for Human or Veterinary or Therapeutic Use

Tel:781-999-4286 E\_mail:info@targetmol.com Address:34 Washington Street,Wellesley Hills,MA 02481