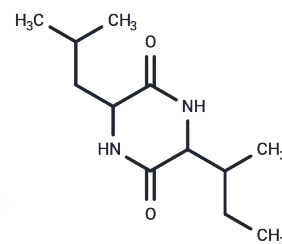


Cyclo(Ile-Leu)

Chemical Properties

CAS No. :	91741-17-2
Formula:	C ₁₂ H ₂₂ N ₂ O ₂
Molecular Weight:	226.32
Storage:	Powder: -20°C for 3 years In solvent: -80°C for 1 year Actual storage temperature shall be subject to the COA.



Biological Description

Description	Cyclo(Ile-Leu) shows cytotoxic activity in vitro.
In vitro	To study the metabolites of mangrove fungus <i>Penicillium oxalicum</i> from the south China sea and search for new anti-tumor compounds. METHODS AND RESULTS: Compounds were isolated by silica gel, ODS column chromatography, Sephadex LH-20 column chromatography and reversed-phase HPLC purification. Structural elucidation was achieved by physico-chemical constants and spectroscopic analysis. MTT assay was used to evaluate the bioactivities in vitro. Six cyclic dipeptides were isolated from the acetone extracts of mycelium of fungus and elucidated as cyclo-(Phe-Ile)(1), cyclo-(Phe-Val)(2), Cyclo(Ile-Leu)(3), cyclo-(Val-Val)(4), cyclo-(Pro-Val)(5), cyclo-(Pro-Gly)(6). Compounds 2, 3 and 5 could evidently inhibit the growth of cancer cell lines HepG II and LNCaP at the concentration of 50 µg·mL ⁻¹ . CONCLUSIONS: All of Compounds are obtained from the marine fungus for the first time. Compounds 2, Cyclo(Ile-Leu) and 5 show cytotoxic activity in vitro.

Preparing Stock Solutions

	1mg	5mg	10mg
1 mM	4.4185 mL	22.0926 mL	44.1852 mL
5 mM	0.8837 mL	4.4185 mL	8.837 mL
10 mM	0.4419 mL	2.2093 mL	4.4185 mL
50 mM	0.0884 mL	0.4419 mL	0.8837 mL

Please select the appropriate solvent to prepare the stock solution, according to the solubility of the product in different solvents. Please use it as soon as possible.

Note: The dilution table applies only to solid products. For liquid products, please calculate the stock solution based on the stated concentration and/or density.

Reference

Cyclic dipeptide constituents from the mangrove fungus *Penicillium oxalicum*(No.092007) Journal of Shenyang Pharmaceutical University 2007-08

Inhibitor · Natural Compounds · Compound Libraries · Recombinant Proteins

This product is for Research Use Only· Not for Human or Veterinary or Therapeutic Use

Tel:781-999-4286 E_mail:info@targetmol.com Address:34 Washington Street,Wellesley Hills,MA 02481