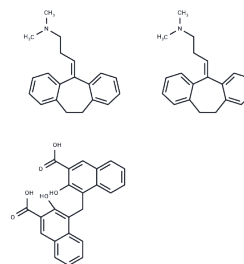


## Amitriptyline Embonate

### Chemical Properties

CAS No. : 17086-03-2  
 Formula: C63H62N2O6  
 Molecular Weight: 943.2  
 Storage: Powder: -20°C for 3 years | In solvent: -80°C for 1 year  
 Actual storage temperature shall be subject to the COA.



### Biological Description

Description	Amitriptyline Embonate is an inhibitor of the re-uptake of norepinephrine and serotonin, thereby inhibiting N-methyl-D-aspartate (NMDA) receptors.
Targets(IC50)	Others,Endogenous Metabolite

### Preparing Stock Solutions

	1mg	5mg	10mg
1 mM	1.0602 mL	5.3011 mL	10.6022 mL
5 mM	0.212 mL	1.0602 mL	2.1204 mL
10 mM	0.106 mL	0.5301 mL	1.0602 mL
50 mM	0.0212 mL	0.106 mL	0.212 mL

Please select the appropriate solvent to prepare the stock solution, according to the solubility of the product in different solvents. Please use it as soon as possible.

Note: The dilution table applies only to solid products. For liquid products, please calculate the stock solution based on the stated concentration and/or density.

**Inhibitor · Natural Compounds · Compound Libraries · Recombinant Proteins**

This product is for Research Use Only· Not for Human or Veterinary or Therapeutic Use

Tel:781-999-4286 E\_mail:info@targetmol.com Address:34 Washington Street,Wellesley Hills,MA 02481