

## Compstatin control peptide acetate

## Chemical Properties

CAS No. :

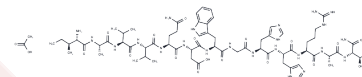
Formula: C68H105N23O19

Molecular Weight: 1548.70

Keep away from moisture

Storage: Powder: -20°C for 3 years | In solvent: -80°C for 1 year

Actual storage temperature shall be subject to the COA.



## Biological Description

Description	Compstatin control peptide acetate is a negative control of Compstatin. Compstatin is an inhibitor of complement protein C3 by binding and inhibiting the cleavage of complement C3.
Targets(IC50)	Complement System

## Preparing Stock Solutions

	1mg	5mg	10mg
1 mM	0.6457 mL	3.2285 mL	6.457 mL
5 mM	0.1291 mL	0.6457 mL	1.2914 mL
10 mM	0.0646 mL	0.3229 mL	0.6457 mL
50 mM	0.0129 mL	0.0646 mL	0.1291 mL

Please select the appropriate solvent to prepare the stock solution, according to the solubility of the product in different solvents. Please use it as soon as possible.

Note: The dilution table applies only to solid products. For liquid products, please calculate the stock solution based on the stated concentration and/or density.

## Reference

Ronald D Gorham Jr, et al. Novel compstatin family peptides inhibit complement activation by drusen-like deposits in human retinal pigmented epithelial cell cultures. Exp Eye Res. 2013 Nov;116:96-108.

**Inhibitor · Natural Compounds · Compound Libraries · Recombinant Proteins**

This product is for Research Use Only · Not for Human or Veterinary or Therapeutic Use

Tel:781-999-4286

E\_mail:info@targetmol.com

Address:34 Washington Street,Wellesley Hills,MA 02481