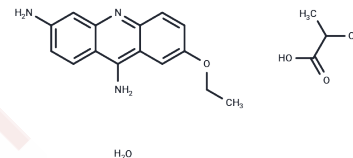


Ethacridine lactate monohydrate

Chemical Properties

CAS No. :	6402-23-9
Formula:	C ₁₈ H ₂₃ N ₃ O ₅
Molecular Weight:	361.4
Storage:	Powder: -20°C for 3 years In solvent: -80°C for 1 year Actual storage temperature shall be subject to the COA.



Biological Description

Description	Ethacridine lactate hydrate is a topically applied anti-infective agent.
Targets(IC50)	Antibacterial, Antibiotic
In vitro	Efficacy of antiseptics of ethacridine lactate against biofilm formed by <i>Pseudomonas aeruginosa</i> and <i>Staphylococcus aureus</i> measured with the novel biofilm-oriented antiseptics test.

Solubility Information

Solubility	H ₂ O: 7.73 mg/mL (21.39 mM), Sonication is recommended. Ethanol: < 1 mg/mL (insoluble or slightly soluble), DMSO: 55 mg/mL (152.19 mM), Sonication is recommended. (< 1 mg/ml refers to the product slightly soluble or insoluble)
In vivo Formulation	10% DMSO+40% PEG300+5% Tween 80+45% Saline: 2 mg/mL (5.53 mM), Sonication is recommended. <i>Please add the solvents sequentially, clarifying the solution as much as possible before adding the next one. Dissolve by heating and/or sonication if necessary. Working solution is recommended to be prepared and used immediately. The formulation provided above is for reference purposes only. In vivo formulations may vary and should be modified based on specific experimental conditions.</i>

Preparing Stock Solutions

	1mg	5mg	10mg
1 mM	2.767 mL	13.8351 mL	27.6702 mL
5 mM	0.5534 mL	2.767 mL	5.534 mL
10 mM	0.2767 mL	1.3835 mL	2.767 mL
50 mM	0.0553 mL	0.2767 mL	0.5534 mL

Please select the appropriate solvent to prepare the stock solution, according to the solubility of the product in different solvents. Please use it as soon as possible.

Note: The dilution table applies only to solid products. For liquid products, please calculate the stock solution based on the stated concentration and/or density.

Reference

Junka A, et al. Int Wound J, 2013.

Inhibitor · Natural Compounds · Compound Libraries · Recombinant Proteins

This product is for Research Use Only · Not for Human or Veterinary or Therapeutic Use

Tel:781-999-4286 E_mail:info@targetmol.com Address:34 Washington Street,Wellesley Hills,MA 02481