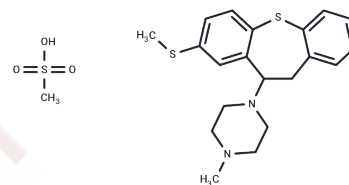


Methiothepin mesylate

Chemical Properties

CAS No. :	74611-28-2
Formula:	C ₂₁ H ₂₈ N ₂ O ₃ S ₃
Molecular Weight:	452.65
Storage:	Keep away from moisture, Store at low temperature Powder: -20°C for 3 years In solvent: -80°C for 1 year <small>Actual storage temperature shall be subject to the COA.</small>



Biological Description

Description	Methiothepin mesylate (Metitepine mesylate) is a potent and non-selective 5-HT ₂ receptor antagonist, used as an antipsychotic.
Targets(IC ₅₀)	5-HT Receptor, Dopamine Receptor

Solubility Information

Solubility	DMSO: 45 mg/mL (99.41 mM), Sonication is recommended. (< 1 mg/ml refers to the product slightly soluble or insoluble)
------------	--

Preparing Stock Solutions

	1mg	5mg	10mg
1 mM	2.2092 mL	11.0461 mL	22.0921 mL
5 mM	0.4418 mL	2.2092 mL	4.4184 mL
10 mM	0.2209 mL	1.1046 mL	2.2092 mL
50 mM	0.0442 mL	0.2209 mL	0.4418 mL

Please select the appropriate solvent to prepare the stock solution, according to the solubility of the product in different solvents. Please use it as soon as possible.

Note: The dilution table applies only to solid products. For liquid products, please calculate the stock solution based on the stated concentration and/or density.

Reference

- Dall'Olio R, et al. Pharmacol Biochem Behav. 1985 Jul;23(1):43-8.
Ding G H, Shen X Y, Zhang D, et al. Mast Cell-Associated Serotonin in Acupoint Contributes to Acupuncture Analgesia in Arthritis Rats by Mediating ATP Release. Frontiers in Bioscience-Landmark. 2023, 28(1): 1.

Inhibitor · Natural Compounds · Compound Libraries · Recombinant Proteins

This product is for Research Use Only · Not for Human or Veterinary or Therapeutic Use

Tel:781-999-4286 E_mail:info@targetmol.com Address:34 Washington Street,Wellesley Hills,MA 02481