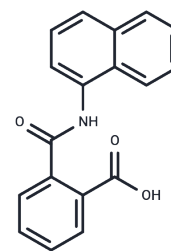


Naptalam

Chemical Properties

CAS No. :	132-66-1
Formula:	C ₁₈ H ₁₃ NO ₃
Molecular Weight:	291.30
Storage:	Keep away from moisture Powder: -20°C for 3 years In solvent: -80°C for 1 year <i>Actual storage temperature shall be subject to the COA.</i>



Biological Description

Description	Naptalam is an herbicide. Naptalam is a dicarboxylic acid monoamide which results from addition of one equivalent of 1-naphthylamine to phthalic anhydride. It is a dicarboxylic acid monoamide, a carboxylic acid and a N-(1-naphthyl)carboxamide. It is a conjugate acid of a naptalamate.
Targets(IC50)	Others

Solubility Information

Solubility	DMSO: 250 mg/mL (858.22 mM), Sonication is recommended. (< 1 mg/ml refers to the product slightly soluble or insoluble)
In vivo Formulation	10% DMSO+40% PEG300+5% Tween 80+45% Saline: 10 mg/mL (34.33 mM), Solution. 10% DMSO+90% Saline: < 10 mg/mL (34.33 mM), Lower concentrations may be soluble, but exact solubility limit is unknown. <i>Please add the solvents sequentially, clarifying the solution as much as possible before adding the next one. Dissolve by heating and/or sonication if necessary. Working solution is recommended to be prepared and used immediately. The formulation provided above is for reference purposes only. In vivo formulations may vary and should be modified based on specific experimental conditions.</i>

Preparing Stock Solutions

	1mg	5mg	10mg
1 mM	3.4329 mL	17.1644 mL	34.3289 mL
5 mM	0.6866 mL	3.4329 mL	6.8658 mL
10 mM	0.3433 mL	1.7164 mL	3.4329 mL
50 mM	0.0687 mL	0.3433 mL	0.6866 mL

Please select the appropriate solvent to prepare the stock solution, according to the solubility of the product in different solvents. Please use it as soon as possible.

Note: The dilution table applies only to solid products. For liquid products, please calculate the stock solution based on the stated concentration and/or density.

Reference

Structures and mechanisms of the Arabidopsis auxin transporter PIN3

Inhibitor · Natural Compounds · Compound Libraries · Recombinant Proteins

This product is for Research Use Only · Not for Human or Veterinary or Therapeutic Use

Tel:781-999-4286 E_mail:info@targetmol.com Address:34 Washington Street,Wellesley Hills,MA 02481