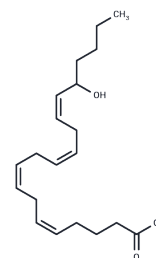


**(±)16-HETE****Chemical Properties**

CAS No. :	128914-46-5
Formula:	C <sub>20</sub> H <sub>32</sub> O <sub>3</sub>
Molecular Weight:	320.473
Storage:	Powder: -20°C for 3 years   In solvent: -80°C for 1 year Actual storage temperature shall be subject to the COA.

**Biological Description**

Description	Electrolyte and fluid transport in the kidney are regulated in part by arachidonic acid and its metabolites. (±)16-HETE is the racemic version of a minor CYP450 metabolite of arachidonic acid released by the kidney upon angiotensin II stimulation. The biological activity of 16-HETE is stereospecific. 16(R)-HETE dose-dependently stimulates vasodilation of the rabbit kidney, however 16(S)-HETE does not affect perfusion pressure. At a concentration of 2 μM the (S)-enantiomer of 16-HETE inhibits proximal tubule ATPase activity by as much as 60%, whereas the (R)-isomer has negligible effects on ATPase activity.
Targets(IC50)	ATPase,Others

**Solubility Information**

Solubility	DMF: Miscible DMSO: Miscible Ethanol: Miscible PBS (pH 7.2): 0.8 mg/mL (2.5 mM), Sonication is recommended. 0.1 M Na <sub>2</sub> CO <sub>3</sub> : 2 mg/mL (6.24 mM), Sonication is recommended. (< 1 mg/ml refers to the product slightly soluble or insoluble)
------------	--

### Preparing Stock Solutions

---

	<b>1mg</b>	<b>5mg</b>	<b>10mg</b>
1 mM	3.1204 mL	15.6021 mL	31.2042 mL
5 mM	0.6241 mL	3.1204 mL	6.2408 mL
10 mM	0.312 mL	1.5602 mL	3.1204 mL
50 mM	0.0624 mL	0.312 mL	0.6241 mL

---

Please select the appropriate solvent to prepare the stock solution, according to the solubility of the product in different solvents. Please use it as soon as possible.

Note: The dilution table applies only to solid products. For liquid products, please calculate the stock solution based on the stated concentration and/or density.

**Inhibitor · Natural Compounds · Compound Libraries · Recombinant Proteins**

This product is for Research Use Only · Not for Human or Veterinary or Therapeutic Use

Tel:781-999-4286 E\_mail:info@targetmol.com Address:34 Washington Street,Wellesley Hills,MA 02481