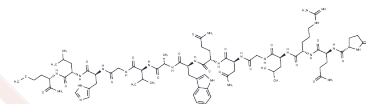


## Bombesin

## Chemical Properties

CAS No. :	31362-50-2
Formula:	C71H110N24O18S
Molecular Weight:	1619.85
Storage:	Keep away from moisture Powder: -20°C for 3 years   In solvent: -80°C for 1 year <small>Actual storage temperature shall be subject to the COA.</small>



## Biological Description

Description	Bombesin is a 14-amino acid peptide originally isolated from the skin of the European fire-bellied toad ( <i>Bombina orientalis</i> ). It has two known homologs in mammals called neuromedin B and gastrin-releasing peptide.
Targets(IC50)	Bombesin Receptor

## Solubility Information

Solubility	H2O: 1.43 mg/mL (0.88 mM), Sonication is recommended. (< 1 mg/ml refers to the product slightly soluble or insoluble)
------------	--

## Preparing Stock Solutions

	1mg	5mg	10mg
1 mM	0.6173 mL	3.0867 mL	6.1734 mL
5 mM	0.1235 mL	0.6173 mL	1.2347 mL
10 mM	0.0617 mL	0.3087 mL	0.6173 mL
50 mM	0.0123 mL	0.0617 mL	0.1235 mL

Please select the appropriate solvent to prepare the stock solution, according to the solubility of the product in different solvents. Please use it as soon as possible.

Note: The dilution table applies only to solid products. For liquid products, please calculate the stock solution based on the stated concentration and/or density.

## Reference

Gonzalez N, et al. Bombesin-related peptides and their receptors: recent advances in their role in physiology and disease states. *Curr Opin Endocrinol Diabetes Obes.* 2008 Feb;15(1):58-64.

**Inhibitor · Natural Compounds · Compound Libraries · Recombinant Proteins**

This product is for Research Use Only · Not for Human or Veterinary or Therapeutic Use

Tel:781-999-4286 E\_mail:info@targetmol.com Address:34 Washington Street,Wellesley Hills,MA 02481