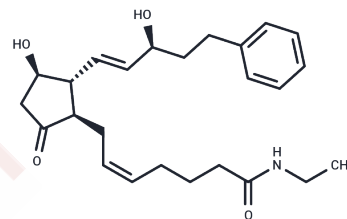


17-phenyl trinor Prostaglandin E2 ethyl amide

Chemical Properties

CAS No. :	1219032-20-8
Formula:	C ₂₅ H ₃₅ NO ₄
Molecular Weight:	413.55
Storage:	Powder: -20°C for 3 years In solvent: -80°C for 1 year Actual storage temperature shall be subject to the COA.



Biological Description

Description	17-phenyl trinor PGE ₂ ethyl amide is derived from 17-phenyl trinor PGE ₂ , a synthetic analog of PGE ₂ that acts as an agonist of EP ₁ and EP ₃ receptors in mice (K _i = 14 and 3.7 nM, respectively) and EP ₁ , EP ₃ , and EP ₄ in rats (K _i = 25, 4.3, and 54 nM, respectively). 17-phenyl trinor PGE ₂ causes contraction of guinea pig ileum at a concentration of 11 μM and is 4.4 times more potent than PGE ₂ as an antifertility agent in hamsters. Modification of the C-1 carboxyl group to an ethyl amide serves to increase lipid solubility, thereby improving uptake into tissues and further lowering the effective concentration. Ethyl amide groups are then removed by amidases, regenerating the active free acid.
Targets(IC ₅₀)	Others,Prostaglandin Receptor

Solubility Information

Solubility	DMF: 100 mg/mL (241.81 mM),Sonication is recommended. PBS (pH 7.2): 0.5 mg/mL (1.21 mM),Sonication is recommended. Ethanol: 100 mg/mL (241.81 mM),Sonication is recommended. DMSO: 100 mg/mL (241.81 mM),Sonication is recommended. (< 1 mg/ml refers to the product slightly soluble or insoluble)
------------	--

Preparing Stock Solutions

	1mg	5mg	10mg
1 mM	2.4181 mL	12.0904 mL	24.1809 mL
5 mM	0.4836 mL	2.4181 mL	4.8362 mL
10 mM	0.2418 mL	1.209 mL	2.4181 mL
50 mM	0.0484 mL	0.2418 mL	0.4836 mL

Please select the appropriate solvent to prepare the stock solution, according to the solubility of the product in different solvents. Please use it as soon as possible.

Note: The dilution table applies only to solid products. For liquid products, please calculate the stock solution based on the stated concentration and/or density.

Inhibitor · Natural Compounds · Compound Libraries · Recombinant Proteins

This product is for Research Use Only · Not for Human or Veterinary or Therapeutic Use

Tel:781-999-4286 E_mail:info@targetmol.com Address:34 Washington Street,Wellesley Hills,MA 02481