

## 3β-Methoxy-2,3-dihydrowithaferin A

## Chemical Properties

CAS No. : 73365-94-3

Formula: C<sub>29</sub>H<sub>42</sub>O<sub>7</sub>

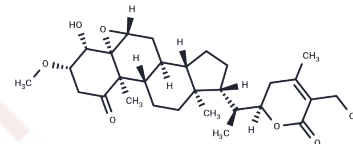
Molecular Weight: 502.65

Storage:

Keep away from direct sunlight, Store at low temperature

Powder: -20°C for 3 years | In solvent: -80°C for 1 year

Actual storage temperature shall be subject to the COA.



## Biological Description

Description	3β-Methoxy-2,3-dihydrowithaferin A is a natural withanolide isolated from <i>Withania somnifera</i> exhibiting inhibitory activity against ROR-α (IC <sub>50</sub> =11.3 μM).
Targets(IC <sub>50</sub> )	Others
In vitro	Withaferin-A (Wi-A) exhibits approximately 90% cytotoxicity against normal cells at 1 μM, while 3β-Methoxy-2,3-dihydrowithaferin A (3βmWi-A) remains well tolerated even at 5-10 μM [1]. Wi-A inhibits clonogenic formation at concentrations as low as 0.1 to 0.3 μM, whereas 3βmWi-A shows no significant effect even at 10-fold higher concentrations [1]. Wi-A treatment increases ROS levels in cells, while 3βmWi-A (0.3, 0.6, or 1.5 μM) reduces ROS levels after cell treatment [1].

## Preparing Stock Solutions

	1mg	5mg	10mg
1 mM	1.9895 mL	9.9473 mL	19.8946 mL
5 mM	0.3979 mL	1.9895 mL	3.9789 mL
10 mM	0.1989 mL	0.9947 mL	1.9895 mL
50 mM	0.0398 mL	0.1989 mL	0.3979 mL

Please select the appropriate solvent to prepare the stock solution, according to the solubility of the product in different solvents. Please use it as soon as possible.

Note: The dilution table applies only to solid products. For liquid products, please calculate the stock solution based on the stated concentration and/or density.

Reference

2,3-Dihydro-3 $\beta$ -methoxy Withaferin-A Protects Normal Cells against Stress: Molecular Evidence of Its Potent Cytoprotective Activity. J Nat Prod. 2017 Oct 27;80(10):2756-2760.

**Inhibitor · Natural Compounds · Compound Libraries · Recombinant Proteins**

This product is for Research Use Only · Not for Human or Veterinary or Therapeutic Use

Tel:781-999-4286 E\_mail:info@targetmol.com Address:34 Washington Street,Wellesley Hills,MA 02481