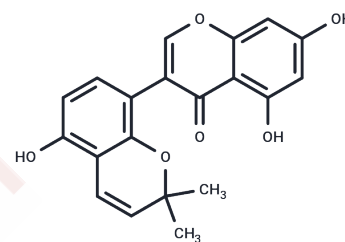


Sophoraisoflavone A

Chemical Properties

CAS No. :	117204-81-6
Formula:	C ₂₀ H ₁₆ O ₆
Molecular Weight:	352.34
Storage:	Powder: -20°C for 3 years In solvent: -80°C for 1 year Actual storage temperature shall be subject to the COA.



Biological Description

Description	Sophoraisoflavone A is a potential MRP inhibitor; it is also an inhibitor of germ tube growth in the AM fungus <i>Gigaspora margarita</i> , it strongly inhibited germ tube growth at 1.25 ug/disc. Sophoraisoflavone A shows inhibitory effects on copper-induced protein oxidative modification of mice brain homogenate in vitro.
Targets(IC50)	Antifection,MRP,Phosphatase
In vitro	White lupin (<i>Lupinus albus</i> L.), a non-host plant for arbuscular mycorrhizal (AM) fungi in the typically mycotrophic family Fabaceae, has been investigated for root metabolites that inhibit hyphal development in AM fungi. Four known pyranoisoflavones, licoisoflavone B (1), Sophoraisoflavone A (2), alpinumisoflavone (3) and 3'-hydroxy-4'-O-methylalpinumisoflavone (4), together with three previously unknown pyranoisoflavones, lupindipyranoisoflavone A (5), 10'-hydroxylicoisoflavone B (6) and 10'-hydroxySophoraisoflavone A (7) were isolated from the root exudates of white lupin as an inhibitor of germ tube growth in the AM fungus <i>Gigaspora margarita</i> [1]

Preparing Stock Solutions

	1mg	5mg	10mg
1 mM	2.8382 mL	14.1908 mL	28.3817 mL
5 mM	0.5676 mL	2.8382 mL	5.6763 mL
10 mM	0.2838 mL	1.4191 mL	2.8382 mL
50 mM	0.0568 mL	0.2838 mL	0.5676 mL

Please select the appropriate solvent to prepare the stock solution, according to the solubility of the product in different solvents. Please use it as soon as possible.

Note: The dilution table applies only to solid products. For liquid products, please calculate the stock solution based on the stated concentration and/or density.

Reference

Lupin pyranoisoflavones inhibiting hyphal development in arbuscular mycorrhizal fungi. *Phytochemistry*. 2010 Nov;71(16):1865-71.

Inhibitor · Natural Compounds · Compound Libraries · Recombinant Proteins

This product is for Research Use Only · Not for Human or Veterinary or Therapeutic Use

Tel:781-999-4286 E_mail:info@targetmol.com Address:34 Washington Street,Wellesley Hills,MA 02481