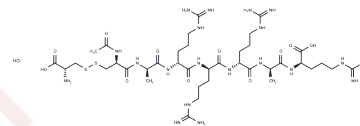


Etelcalcetide hydrochloride

Chemical Properties

CAS No. :	1334237-71-6
Formula:	C ₃₈ H ₇₃ N ₂ O ₁₀ S ₂ .17/2HCl
Molecular Weight:	1353.33
Storage:	Keep away from moisture Powder: -20°C for 3 years In solvent: -80°C for 1 year <small>Actual storage temperature shall be subject to the COA.</small>



Biological Description

Description	Etelcalcetide hydrochloride (AMG 416 hydrochloride) is a synthetic peptide that serves as an allosteric modulator of the calcium-sensing receptor (CaSR), effectively reducing parathyroid hormone (PTH) levels in patients with secondary hyperparathyroidism undergoing hemodialysis.
Targets(IC50)	CaSR

Solubility Information

Solubility	H ₂ O: 250 mg/mL (184.73 mM), Sonication is recommended. DMSO: Insoluble, (< 1 mg/ml refers to the product slightly soluble or insoluble)
------------	---

Preparing Stock Solutions

	1mg	5mg	10mg
1 mM	0.7389 mL	3.6946 mL	7.3892 mL
5 mM	0.1478 mL	0.7389 mL	1.4778 mL
10 mM	0.0739 mL	0.3695 mL	0.7389 mL
50 mM	0.0148 mL	0.0739 mL	0.1478 mL

Please select the appropriate solvent to prepare the stock solution, according to the solubility of the product in different solvents. Please use it as soon as possible.

Note: The dilution table applies only to solid products. For liquid products, please calculate the stock solution based on the stated concentration and/or density.

Reference

Block GA, et al. Effect of Etelcalcetide vs Cinacalcet on Serum Parathyroid Hormone in Patients Receiving Hemodialysis With Secondary Hyperparathyroidism: A Randomized Clinical Trial. JAMA. 2017 Jan 10;317(2):156-164.

Inhibitor · Natural Compounds · Compound Libraries · Recombinant Proteins

This product is for Research Use Only · Not for Human or Veterinary or Therapeutic Use

Tel:781-999-4286 E_mail:info@targetmol.com Address:34 Washington Street,Wellesley Hills,MA 02481