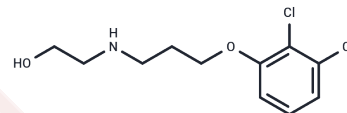


## 2,3-DCPE

## Chemical Properties

CAS No. :	418788-90-6
Formula:	C <sub>11</sub> H <sub>15</sub> Cl <sub>2</sub> N <sub>2</sub> O
Molecular Weight:	264.15
Storage:	Powder: -20°C for 3 years   In solvent: -80°C for 1 year Actual storage temperature shall be subject to the COA.



## Biological Description

Description	Induces p21 expression and S-phase arrest in cancer cells via ERK-mediated pathways. IC50 values are 0.89 and 12.6 $\mu$ M for LoVo human colon cancer cell line and normal human fibroblasts respectively.
Targets(IC50)	Apoptosis,Others
In vitro	Selectively induces apoptosis and downregulates Bcl-XL protein expression in various human cancer cells versus normal cells in vitro.

## Solubility Information

Solubility	H <sub>2</sub> O: <30.06 mg/mL, Sonication is recommended. (< 1 mg/ml refers to the product slightly soluble or insoluble)
------------	---

## Preparing Stock Solutions

	1mg	5mg	10mg
1 mM	3.7857 mL	18.9286 mL	37.8573 mL
5 mM	0.7571 mL	3.7857 mL	7.5715 mL
10 mM	0.3786 mL	1.8929 mL	3.7857 mL
50 mM	0.0757 mL	0.3786 mL	0.7571 mL

Please select the appropriate solvent to prepare the stock solution, according to the solubility of the product in different solvents. Please use it as soon as possible.

Note: The dilution table applies only to solid products. For liquid products, please calculate the stock solution based on the stated concentration and/or density.

**Inhibitor · Natural Compounds · Compound Libraries · Recombinant Proteins**

This product is for Research Use Only · Not for Human or Veterinary or Therapeutic Use

Tel:781-999-4286 E\_mail:info@targetmol.com Address:34 Washington Street,Wellesley Hills,MA 02481