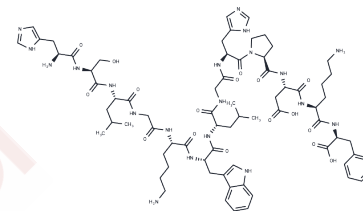


[SER140]-PLP(139-151)

Chemical Properties

CAS No. : 122018-58-0
 Formula: C72H104N20O17
 Molecular Weight: 1521.72
 Storage: Keep away from moisture
 Powder: -20°C for 3 years | In solvent: -80°C for 1 year
 Actual storage temperature shall be subject to the COA.



Biological Description

Description	[SER140]-PLP(139-151) is a polypeptide fragment derived from the myelin-associated lipid protein.
-------------	---

Solubility Information

Solubility	H2O: 11.11 mg/mL (7.3 mM), Sonication is recommended. (< 1 mg/ml refers to the product slightly soluble or insoluble)
------------	--

Preparing Stock Solutions

	1mg	5mg	10mg
1 mM	0.6572 mL	3.2858 mL	6.5715 mL
5 mM	0.1314 mL	0.6572 mL	1.3143 mL
10 mM	0.0657 mL	0.3286 mL	0.6572 mL
50 mM	0.0131 mL	0.0657 mL	0.1314 mL

Please select the appropriate solvent to prepare the stock solution, according to the solubility of the product in different solvents. Please use it as soon as possible.

Note: The dilution table applies only to solid products. For liquid products, please calculate the stock solution based on the stated concentration and/or density.

Reference

Kordopati GG, et al. Biologically relevant conformational features of linear and cyclic proteolipid protein (PLP) peptide analogues obtained by high-resolution nuclear magnetic resonance and molecular dynamics. J Comput Aided Mol Des. 2017 Jul 29.

Inhibitor · Natural Compounds · Compound Libraries · Recombinant Proteins

This product is for Research Use Only · Not for Human or Veterinary or Therapeutic Use

Tel: 781-999-4286 E_mail: info@targetmol.com Address: 34 Washington Street, Wellesley Hills, MA 02481