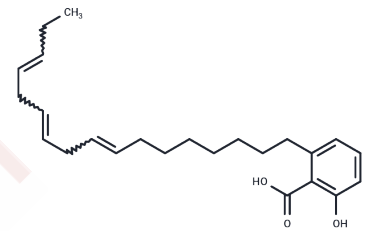


SB 202742

Chemical Properties

CAS No. : 124576-72-3
 Formula: C₂₄H₃₄O₃
 Molecular Weight: 370.52
 Storage: Powder: -20°C for 3 years | In solvent: -80°C for 1 year
 Actual storage temperature shall be subject to the COA.



Biological Description

Description	SB 202742 is an inhibitor of beta-lactamase, it is isolated from <i>Spondias mombin</i> .
Targets(IC50)	Others

Preparing Stock Solutions

	1mg	5mg	10mg
1 mM	2.6989 mL	13.4945 mL	26.9891 mL
5 mM	0.5398 mL	2.6989 mL	5.3978 mL
10 mM	0.2699 mL	1.3495 mL	2.6989 mL
50 mM	0.054 mL	0.2699 mL	0.5398 mL

Please select the appropriate solvent to prepare the stock solution, according to the solubility of the product in different solvents. Please use it as soon as possible.

Note: The dilution table applies only to solid products. For liquid products, please calculate the stock solution based on the stated concentration and/or density.

Reference

Ho AK, Price L, Mackova M, Chik CL. Potentiation of cyclic AMP and cyclic GMP accumulation by p38 mitogen-activated protein kinase (p38MAPK) inhibitors in rat pinealocytes. *Biochem Pharmacol.* 2001 Dec 15;62(12):1605-11. PubMed PMID: 11755113.

Coates NJ, Gilpin ML, Gwynn MN, Lewis DE, Milner PH, Spear SR, Tyler JW. SB-202742, a novel beta-lactamase inhibitor isolated from *Spondias mombin*. *J Nat Prod.* 1994 May;57(5):654-7. PubMed PMID: 8064298.

Inhibitor · Natural Compounds · Compound Libraries · Recombinant Proteins

This product is for Research Use Only. Not for Human or Veterinary or Therapeutic Use

Tel:781-999-4286 E_mail:info@targetmol.com Address:34 Washington Street,Wellesley Hills,MA 02481