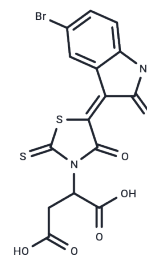


CID5721353

Chemical Properties

CAS No. : 301356-95-6
 Formula: C₁₅H₉BrN₂O₆S₂
 Molecular Weight: 457.28
 Storage: Powder: -20°C for 3 years | In solvent: -80°C for 1 year
 Actual storage temperature shall be subject to the COA.



Biological Description

Description	CID5721353 (BCL6 inhibitor) is a B-Cell Lymphoma 6 Inhibitor (BCL6 inhibitor) that disrupts BCL6/corepressor complexes in vitro and in vivo, and was shown to bind the critical site within the BTB groove.
Targets(IC50)	Apoptosis,Bcl-2 Family,Bcl-6

Solubility Information

Solubility	DMSO: 60 mg/mL (131.21 mM),Sonication is recommended. (< 1 mg/ml refers to the product slightly soluble or insoluble)
In vivo Formulation	10% DMSO+40% PEG300+5% Tween 80+45% Saline: 2 mg/mL (4.37 mM),Sonication is recommended. <i>Please add the solvents sequentially, clarifying the solution as much as possible before adding the next one. Dissolve by heating and/or sonication if necessary. Working solution is recommended to be prepared and used immediately. The formulation provided above is for reference purposes only. In vivo formulations may vary and should be modified based on specific experimental conditions.</i>

Preparing Stock Solutions

	1mg	5mg	10mg
1 mM	2.1868 mL	10.9342 mL	21.8684 mL
5 mM	0.4374 mL	2.1868 mL	4.3737 mL
10 mM	0.2187 mL	1.0934 mL	2.1868 mL
50 mM	0.0437 mL	0.2187 mL	0.4374 mL

Please select the appropriate solvent to prepare the stock solution, according to the solubility of the product in different solvents. Please use it as soon as possible.

Note: The dilution table applies only to solid products. For liquid products, please calculate the stock solution based on the stated concentration and/or density.

Reference

Cerchietti LC, et al. A small-molecule inhibitor of BCL6 kills DLBCL cells in vitro and in vivo. *Cancer Cell*. 2010 Apr 13; 17(4):400-11.

Inhibitor · Natural Compounds · Compound Libraries · Recombinant Proteins

This product is for Research Use Only · Not for Human or Veterinary or Therapeutic Use

Tel: 781-999-4286 E_mail: info@targetmol.com Address: 34 Washington Street, Wellesley Hills, MA 02481