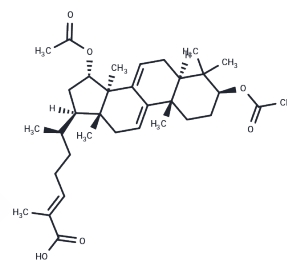


## Ganodermic acid S

## Chemical Properties

CAS No. :	112430-63-4
Formula:	C <sub>34</sub> H <sub>50</sub> O <sub>6</sub>
Molecular Weight:	554.76
Storage:	Powder: -20°C for 3 years   In solvent: -80°C for 1 year Actual storage temperature shall be subject to the COA.



## Biological Description

Description	Ganodermic acid S, as a membrane acting agent isolated from the fungus Ganoderma lucidum, exerts multiple effects on human platelet function.
Targets(IC50)	Others

## Preparing Stock Solutions

	1mg	5mg	10mg
1 mM	1.8026 mL	9.0129 mL	18.0258 mL
5 mM	0.3605 mL	1.8026 mL	3.6052 mL
10 mM	0.1803 mL	0.9013 mL	1.8026 mL
50 mM	0.0361 mL	0.1803 mL	0.3605 mL

Please select the appropriate solvent to prepare the stock solution, according to the solubility of the product in different solvents. Please use it as soon as possible.

Note: The dilution table applies only to solid products. For liquid products, please calculate the stock solution based on the stated concentration and/or density.

## Reference

- Su CY, Shiao MS, Wang CT. Differential effects of ganodermic acid S on the thromboxane A<sub>2</sub>-signaling pathways in human platelets. *Biochem Pharmacol.* 1999 Aug 15;58(4):587-95. PubMed PMID: 10413295.
- Su C, Shiao M, Wang C. Potentiation of ganodermic acid S on prostaglandin E<sub>1</sub>-induced cyclic AMP elevation in human platelets. *Thromb Res.* 2000 Jul 15;99(2):135-45. PubMed PMID: 10946087.
- Wang CN, Chen JC, Shiao MS, Wang CT. The effect of ganodermic acid S on human platelets. *Adv Exp Med Biol.* 1990;281:265-9. PubMed PMID: 1966354.
- Wang CN, Chen JC, Shiao MS, Wang CT. The aggregation of human platelet induced by ganodermic acid S. *Biochim Biophys Acta.* 1989 Nov 17;986(1):151-60. PubMed PMID: 2819092.

**Inhibitor · Natural Compounds · Compound Libraries · Recombinant Proteins**

This product is for Research Use Only · Not for Human or Veterinary or Therapeutic Use

Tel:781-999-4286 E\_mail:info@targetmol.com Address:34 Washington Street,Wellesley Hills,MA 02481