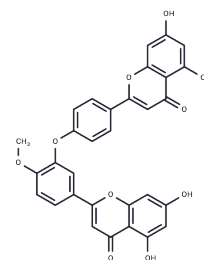


4'-O-Methylochnaflavone

Chemical Properties

CAS No. :	49619-87-6
Formula:	C ₃₁ H ₂₀ O ₁₀
Molecular Weight:	552.48
Storage:	Powder: -20°C for 3 years In solvent: -80°C for 1 year Actual storage temperature shall be subject to the COA.



Biological Description

Description	4'-O-Methylochnaflavone is a biflavonoid compound extracted from the leaves of Ginkgo biloba L., which inhibits lymphocyte proliferation induced by Con A or LPS.
Targets(IC50)	Others
In vitro	4'-O-Methylochnaflavone treatment significantly increased the content of nitric oxide in rat spongy endothelial cells (RCECs), and had a significant repair effect on PA-stimulated endothelial dysfunction. [1] 4'-O-Methylochnaflavone inhibits PIM3 with an IC50 value of 11.84 μM. [2]

Solubility Information

Solubility	H ₂ O: < 1 mg/mL (insoluble or slightly soluble) DMSO: < 1 mg/mL (insoluble or slightly soluble) (< 1 mg/ml refers to the product slightly soluble or insoluble)
------------	---

Preparing Stock Solutions

	1mg	5mg	10mg
1 mM	1.810 mL	9.0501 mL	18.1002 mL
5 mM	0.362 mL	1.810 mL	3.620 mL
10 mM	0.181 mL	0.905 mL	1.810 mL
50 mM	0.0362 mL	0.181 mL	0.362 mL

Please select the appropriate solvent to prepare the stock solution, according to the solubility of the product in different solvents. Please use it as soon as possible.

Note: The dilution table applies only to solid products. For liquid products, please calculate the stock solution based on the stated concentration and/or density.

Reference

- Gu YY, et al. [Effects of 4'-O-methylchrysin on endothelial dysfunction induced by palmitic acid in rat cavernous endothelial cells]. Beijing Da Xue Xue Bao Yi Xue Ban. 2022 Aug 18;54(4):599-604. Chinese.
- Russell, M.H. et al. Selectivity and potency of natural product PIM kinase inhibitors identified by in silico docking. Med Chem Res 30, 1117-1124 (2021).

Inhibitor · Natural Compounds · Compound Libraries · Recombinant Proteins

This product is for Research Use Only · Not for Human or Veterinary or Therapeutic Use

Tel:781-999-4286 E_mail:info@targetmol.com Address:34 Washington Street,Wellesley Hills,MA 02481