

H-Phe-Phe-OH

Chemical Properties

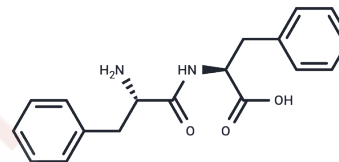
CAS No. : 2577-40-4

Formula: C₁₈H₂₀N₂O₃

Molecular Weight: 312.36

Storage: Keep away from moisture, Store at low temperature
Powder: -20°C for 3 years | In solvent: -80°C for 1 year

Actual storage temperature shall be subject to the COA.



Biological Description

Description	H-Phe-Phe-OH is a dipeptide composed of two phenylalanine (an essential amino acid and precursor to tyrosine) units linked together.
Targets(IC50)	Endogenous Metabolite

Solubility Information

Solubility	H ₂ O: Insoluble, DMSO: Insoluble, (< 1 mg/ml refers to the product slightly soluble or insoluble)
------------	--

Preparing Stock Solutions

	1mg	5mg	10mg
1 mM	3.2014 mL	16.0072 mL	32.0143 mL
5 mM	0.6403 mL	3.2014 mL	6.4029 mL
10 mM	0.3201 mL	1.6007 mL	3.2014 mL
50 mM	0.064 mL	0.3201 mL	0.6403 mL

Please select the appropriate solvent to prepare the stock solution, according to the solubility of the product in different solvents. Please use it as soon as possible.

Note: The dilution table applies only to solid products. For liquid products, please calculate the stock solution based on the stated concentration and/or density.

Reference

de Groot NS, et al. Ile-phe dipeptide self-assembly: clues to amyloid formation. *Biophys J.* 2007 Mar 1;92(5):1732-41

Inhibitor · Natural Compounds · Compound Libraries · Recombinant Proteins

This product is for Research Use Only · Not for Human or Veterinary or Therapeutic Use

Tel:781-999-4286 E_mail:info@targetmol.com Address:34 Washington Street,Wellesley Hills,MA 02481