

F15845

Chemical Properties

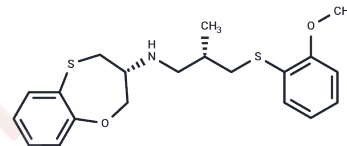
CAS No. : 470454-73-0

Formula: C₂₀H₂₅NO₂S₂

Molecular Weight: 375.55

Storage: Powder: -20°C for 3 years | In solvent: -80°C for 1 year

Actual storage temperature shall be subject to the COA.



Biological Description

Description	F 15845 is a potent and persistent blocker of the sodium current. It possesses cardioprotective properties and exhibits both anti-ischemic activity and short- and long-term cardioprotection following myocardial infarction. Furthermore, F 15845 finds utility in the investigation of myocardial functional impairment [1].
Targets(IC50)	Others,Sodium Channel
In vitro	F 15845, at concentrations ranging from 10 nM to 10 μM, has been shown to concentration-dependently mitigate veratrine-induced diastolic contracture in isolated atria, with an IC ₅₀ value of 0.14 μM [1]. Additionally, when administered at 0.1 to 10 μM, it effectively preserves the viability of isolated cardiomyocytes challenged with lysophosphatidylcholine (LPC) [1]. At a specific concentration of 0.3 μM, F 15845 significantly counteracts the increase in sodium levels ([Na ⁺]) observed during no-flow ischemia, and when applied at the same concentration over a duration of 0-35 minutes, it not only delays the reduction in [Na ⁺] but also prominently marks and sustains it upon reperfusion [1].
In vivo	F 15845, administered intravenously at doses of 5 mg/kg, demonstrates significant cardioprotective effects in anesthetized rats. This includes a substantial reduction in infarct size, a decrease in troponin I levels, and the prevention of long-term infarct size expansion, underscoring its potential therapeutic benefits in cardiac injury models.

Preparing Stock Solutions

	1mg	5mg	10mg
1 mM	2.6628 mL	13.3138 mL	26.6276 mL
5 mM	0.5326 mL	2.6628 mL	5.3255 mL
10 mM	0.2663 mL	1.3314 mL	2.6628 mL
50 mM	0.0533 mL	0.2663 mL	0.5326 mL

Please select the appropriate solvent to prepare the stock solution, according to the solubility of the product in different solvents. Please use it as soon as possible.

Note: The dilution table applies only to solid products. For liquid products, please calculate the stock solution based on the stated concentration and/or density.

Inhibitor · Natural Compounds · Compound Libraries · Recombinant Proteins

This product is for Research Use Only · Not for Human or Veterinary or Therapeutic Use

Tel:781-999-4286 E_mail:info@targetmol.com Address:34 Washington Street,Wellesley Hills,MA 02481