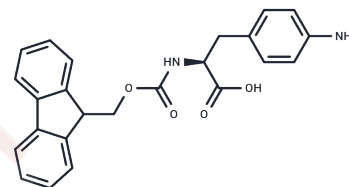


Fmoc-Phe(4-NH₂)-OH

Chemical Properties

CAS No. :	95753-56-3
Formula:	C ₂₄ H ₂₂ N ₂ O ₄
Molecular Weight:	402.44
Storage:	Keep away from moisture Powder: -20°C for 3 years In solvent: -80°C for 1 year <i>Actual storage temperature shall be subject to the COA.</i>



Biological Description

Description	Fmoc-Phe(4-NH ₂)-OH (Fmoc-4-Amino-L-phenylalanine) is a phenylalanine derivative used in supramolecular hydrogel research.
Targets(IC50)	Others,Amino Acids and Derivatives

Solubility Information

Solubility	DMSO: 80 mg/mL (198.79 mM),Sonication is recommended. (< 1 mg/ml refers to the product slightly soluble or insoluble)
In vivo Formulation	10% DMSO+90% Corn Oil: 3.3 mg/mL (8.2 mM),Sonication is recommended. <i>Please add the solvents sequentially, clarifying the solution as much as possible before adding the next one. Dissolve by heating and/or sonication if necessary. Working solution is recommended to be prepared and used immediately. The formulation provided above is for reference purposes only. In vivo formulations may vary and should be modified based on specific experimental conditions.</i>

Preparing Stock Solutions

	1mg	5mg	10mg
1 mM	2.4848 mL	12.4242 mL	24.8484 mL
5 mM	0.497 mL	2.4848 mL	4.9697 mL
10 mM	0.2485 mL	1.2424 mL	2.4848 mL
50 mM	0.0497 mL	0.2485 mL	0.497 mL

Please select the appropriate solvent to prepare the stock solution, according to the solubility of the product in different solvents. Please use it as soon as possible.

Note: The dilution table applies only to solid products. For liquid products, please calculate the stock solution based on the stated concentration and/or density.

Reference

Yang, Jianzhong, et al. From fullerene amino acids to fullerene peptides. Rice University ProQuest Dissertations & Theses, 2006.3216803.

Inhibitor · Natural Compounds · Compound Libraries · Recombinant Proteins

This product is for Research Use Only · Not for Human or Veterinary or Therapeutic Use

Tel: 781-999-4286 E_mail: info@targetmol.com Address: 34 Washington Street, Wellesley Hills, MA 02481