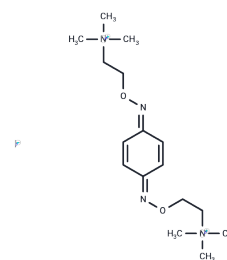


L.M. 2005

Chemical Properties

CAS No. : 10238-07-0
 Formula: C₁₆H₃₀N₄O₂
 Molecular Weight: 437.34
 Storage: Powder: -20°C for 3 years | In solvent: -80°C for 1 year
 Actual storage temperature shall be subject to the COA.



Biological Description

Description	L.M. 2005 is a bioactive chemical.
Targets(IC50)	Others

Preparing Stock Solutions

	1mg	5mg	10mg
1 mM	2.2866 mL	11.4328 mL	22.8655 mL
5 mM	0.4573 mL	2.2866 mL	4.5731 mL
10 mM	0.2287 mL	1.1433 mL	2.2866 mL
50 mM	0.0457 mL	0.2287 mL	0.4573 mL

Please select the appropriate solvent to prepare the stock solution, according to the solubility of the product in different solvents. Please use it as soon as possible.

Note: The dilution table applies only to solid products. For liquid products, please calculate the stock solution based on the stated concentration and/or density.

Reference

- Hofer H, Carroll J, Neitz J, Neitz M, Williams DR. Organization of the human trichromatic cone mosaic. *J Neurosci*. 2005 Oct 19;25(42):9669-79. Erratum in: *J Neurosci*. 2006 Jan 11;26(2):722. PubMed PMID: 16237171.
- Nath CE, Shaw PJ, Montgomery K, Earl JW. Melphalan pharmacokinetics in children with malignant disease: influence of body weight, renal function, carboplatin therapy and total body irradiation. *Br J Clin Pharmacol*. 2005 Mar;59(3):314-24. PubMed PMID: 15752378; PubMed Central PMCID: PMC1884786.
- Wang Y, Eldridge N, Metersky ML, Verzier NR, Meehan TP, Pandolfi MM, Foody JM, Ho SY, Galusha D, Kliman RE, Sonnenfeld N, Krumholz HM, Battles J. National trends in patient safety for four common conditions, 2005-2011. *N Engl J Med*. 2014 Jan 23;370(4):341-51. doi: 10.1056/NEJMsa1300991. PubMed PMID: 24450892; PubMed Central PMCID: PMC4042316.
- Stockman A, Plummer DJ. Long-wavelength adaptation reveals slow, spectrally opponent inputs to the human luminance pathway. *J Vis*. 2005 Oct 21;5(9):702-16. PubMed PMID: 16356080.

Inhibitor · Natural Compounds · Compound Libraries · Recombinant Proteins

This product is for Research Use Only · Not for Human or Veterinary or Therapeutic Use

Tel:781-999-4286 E_mail:info@targetmol.com Address:34 Washington Street,Wellesley Hills,MA 02481