

PA Janelia Fluor 646, SE

Chemical Properties

CAS No. : 2093120-32-0

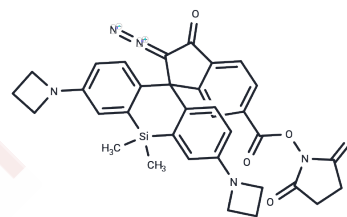
Formula: C₃₄H₃₁N₅O₅Si

Molecular Weight: 617.737

Keep away from direct sunlight

Storage: Powder: -20°C for 3 years | In solvent: -80°C for 1 year

Actual storage temperature shall be subject to the COA.



Biological Description

Description	PA Janelia Fluor 646, SE (PA-JF646-NHS), a photoactivatable fluorescent dye, is an NHS ester for coupling to primary amine groups. PA-JF646-NHS is non-fluorescent until activated at 365 nm. NHS ester can be converted to relevant substrate for use in self-labeling tag systems, e.g. HaloTag and SNAP-tag. PA-JF646-NHS is used for single molecule tracking and super resolution microscopy in live cells, specifically live cell sptPALM and fixed cell PALM. (λ Excitation/emission ~650/664 nm).
Targets(IC50)	Others

Preparing Stock Solutions

	1mg	5mg	10mg
1 mM	1.6188 mL	8.094 mL	16.188 mL
5 mM	0.3238 mL	1.6188 mL	3.2376 mL
10 mM	0.1619 mL	0.8094 mL	1.6188 mL
50 mM	0.0324 mL	0.1619 mL	0.3238 mL

Please select the appropriate solvent to prepare the stock solution, according to the solubility of the product in different solvents. Please use it as soon as possible.

Note: The dilution table applies only to solid products. For liquid products, please calculate the stock solution based on the stated concentration and/or density.

Inhibitor · Natural Compounds · Compound Libraries · Recombinant Proteins

This product is for Research Use Only · Not for Human or Veterinary or Therapeutic Use

Tel: 781-999-4286

E_mail: info@targetmol.com

Address: 34 Washington Street, Wellesley Hills, MA 02481