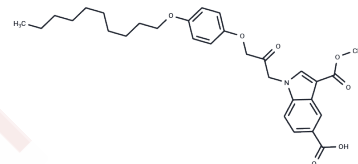


CAY10502

## Chemical Properties

CAS No. : 888320-29-4  
 Formula: C30H37NO7  
 Molecular Weight: 523.62  
 Storage: Powder: -20°C for 3 years | In solvent: -80°C for 1 year  
 Actual storage temperature shall be subject to the COA.



## Biological Description

Description	Phospholipase A2 (PLA2) catalyzes the hydrolysis of phospholipids at the sn-2 position leading to the production of lysophospholipids and free fatty acids. Calcium-dependent cytosolic PLA2 (cPLA2 $\alpha$ ) is a 85 kDa enzyme that plays a key role in the arachidonic cascade and the inflammatory response associated with this metabolic pathway. CAY10502 is a potent inhibitor of calcium-dependent cytosolic PLA2 $\alpha$ (cPLA2 $\alpha$ ) with an IC50 value of 4.3 nM for the purified enzyme from human platelets. It inhibits arachidonic acid mobilization from A23187-stimulated or TPA-stimulated human platelets with IC50 values of 570 and 0.9 nM, respectively.
Targets(IC50)	Others,Phospholipase

## Solubility Information

Solubility	DMF: 20 mg/mL (38.2 mM),Sonication is recommended. DMSO: 10 mg/mL (19.1 mM),Sonication is recommended. DMF:PBS (pH 7.2)(1:1): 0.5 mg/mL (0.95 mM),Sonication is recommended. (< 1 mg/ml refers to the product slightly soluble or insoluble)
------------	---

## Preparing Stock Solutions

	1mg	5mg	10mg
1 mM	1.9098 mL	9.5489 mL	19.0978 mL
5 mM	0.382 mL	1.9098 mL	3.8196 mL
10 mM	0.191 mL	0.9549 mL	1.9098 mL
50 mM	0.0382 mL	0.191 mL	0.382 mL

Please select the appropriate solvent to prepare the stock solution, according to the solubility of the product in different solvents. Please use it as soon as possible.

Note: The dilution table applies only to solid products. For liquid products, please calculate the stock solution based on the stated concentration and/or density.

**Inhibitor · Natural Compounds · Compound Libraries · Recombinant Proteins**

This product is for Research Use Only · Not for Human or Veterinary or Therapeutic Use

Tel:781-999-4286 E\_mail:info@targetmol.com Address:34 Washington Street,Wellesley Hills,MA 02481