

## Nauclefine

## Chemical Properties

CAS No. : 57103-51-2

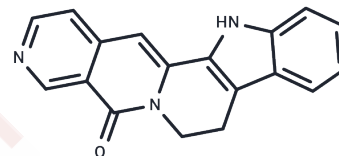
Formula: C<sub>18</sub>H<sub>13</sub>N<sub>3</sub>O

Molecular Weight: 287.32

Store at low temperature

Storage: Powder: -20°C for 3 years | In solvent: -80°C for 1 year

Actual storage temperature shall be subject to the COA.



## Biological Description

Description	Nauclefine (Parvine) is a plant indole alkaloid natural product and induces apoptosis of diverse cancer cells via a PDE3A-SLFN12 dependent death pathway. Nauclefine binds PDE3A but does not inhibit the PDE3A's phosphodiesterase activity.
Targets(IC50)	Apoptosis,PDE
In vivo	Nauclefine inhibits tumor xenograft growth in vivo, doing so in a PDE3A- and SLFN12-dependent manner[1].

## Solubility Information

Solubility	DMSO: 20 mg/mL (69.61 mM),Sonication is recommended. (< 1 mg/ml refers to the product slightly soluble or insoluble)
------------	---

## Preparing Stock Solutions

	1mg	5mg	10mg
1 mM	3.4804 mL	17.4022 mL	34.8044 mL
5 mM	0.6961 mL	3.4804 mL	6.9609 mL
10 mM	0.348 mL	1.7402 mL	3.4804 mL
50 mM	0.0696 mL	0.348 mL	0.6961 mL

Please select the appropriate solvent to prepare the stock solution, according to the solubility of the product in different solvents. Please use it as soon as possible.

Note: The dilution table applies only to solid products. For liquid products, please calculate the stock solution based on the stated concentration and/or density.

Reference

Ai Y, et al. An alkaloid initiates phosphodiesterase 3A-schlafen 12 dependent apoptosis without affecting the phosphodiesterase activity. Nat Commun. 2020 Jun 26;11(1):3236.

**Inhibitor · Natural Compounds · Compound Libraries · Recombinant Proteins**

This product is for Research Use Only · Not for Human or Veterinary or Therapeutic Use

Tel:781-999-4286 E\_mail:info@targetmol.com Address:34 Washington Street,Wellesley Hills,MA 02481