

CCG-222740

Chemical Properties

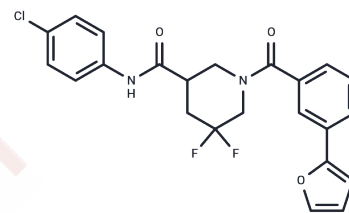
CAS No. : 1922098-69-8

Formula: C₂₃H₁₉ClF₂N₂O₃

Molecular Weight: 444.86

Storage: Powder: -20°C for 3 years | In solvent: -80°C for 1 year

Actual storage temperature shall be subject to the COA.



Biological Description

Description	CCG-222740 is an inhibitor of Rho/MRTF pathway
Targets(IC50)	Rho,ROCK,Ras
In vitro	CCG-222740 decreases the activation of stellate cells in vitro and in vivo, by reducing the levels of alpha smooth muscle actin(α -SMA) expression[1].

Solubility Information

Solubility	DMSO: 125 mg/mL (280.99 mM),Sonication is recommended. (< 1 mg/ml refers to the product slightly soluble or insoluble)
In vivo Formulation	10% DMSO+40% PEG300+5% Tween 80+45% Saline: 4 mg/mL (8.99 mM),Sonication is recommended. <i>Please add the solvents sequentially, clarifying the solution as much as possible before adding the next one. Dissolve by heating and/or sonication if necessary. Working solution is recommended to be prepared and used immediately. The formulation provided above is for reference purposes only. In vivo formulations may vary and should be modified based on specific experimental conditions.</i>

Preparing Stock Solutions

	1mg	5mg	10mg
1 mM	2.2479 mL	11.2395 mL	22.479 mL
5 mM	0.4496 mL	2.2479 mL	4.4958 mL
10 mM	0.2248 mL	1.1239 mL	2.2479 mL
50 mM	0.045 mL	0.2248 mL	0.4496 mL

Please select the appropriate solvent to prepare the stock solution, according to the solubility of the product in different solvents. Please use it as soon as possible.

Note: The dilution table applies only to solid products. For liquid products, please calculate the stock solution based on the stated concentration and/or density.

Reference

Yu-Wai-Man C , Spencer-Dene B , Lee R M H , et al. Local delivery of novel MRTF/SRF inhibitors prevents scar tissue formation in a preclinical model of fibrosis[J]. Scientific Reports, 2017, 7(1):518.

Inhibitor · Natural Compounds · Compound Libraries · Recombinant Proteins

This product is for Research Use Only · Not for Human or Veterinary or Therapeutic Use

Tel:781-999-4286 E_mail:info@targetmol.com Address:34 Washington Street,Wellesley Hills,MA 02481