

Mcl1-IN-26

Chemical Properties

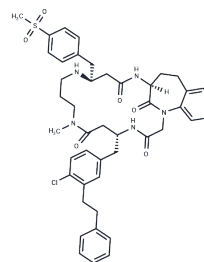
CAS No. : 2056238-04-9

Formula: C₄₅H₅₂ClN₅O₆S

Molecular Weight: 826.44

Storage: Powder: -20°C for 3 years | In solvent: -80°C for 1 year

Actual storage temperature shall be subject to the COA.



Biological Description

Description	Mcl1-IN-26 is an effective and selective myeloid cell leukemia 1 inhibitor.
Targets(IC50)	Bcl-2 Family,Others

Preparing Stock Solutions

	1mg	5mg	10mg
1 mM	1.210 mL	6.050 mL	12.1001 mL
5 mM	0.242 mL	1.210 mL	2.420 mL
10 mM	0.121 mL	0.605 mL	1.210 mL
50 mM	0.0242 mL	0.121 mL	0.242 mL

Please select the appropriate solvent to prepare the stock solution, according to the solubility of the product in different solvents. Please use it as soon as possible.

Note: The dilution table applies only to solid products. For liquid products, please calculate the stock solution based on the stated concentration and/or density.

Reference

Alyafee YA, Alaamery M, Bawazeer S, Almutairi MS, Alghamdi B, Alomran N, Sheereen A, Daghestani M, Massadeh S. Preparation of anastrozole loaded PEG-PLA nanoparticles: evaluation of apoptotic response of breast cancer cell lines. *Int J Nanomedicine*. 2017 Dec 28;13:199-208. doi: 10.2147/IJN.S151139. eCollection 2018. PubMed PMID: 29343958; PubMed Central PMCID: PMC5749378.

Ponder KG, Matulis SM, Hitosugi S, Gupta VA, Sharp C, Burrows F, Nooka AK, Kaufman JL, Lonial S, Boise LH. Dual inhibition of Mcl-1 by the combination of carfilzomib and TG02 in multiple myeloma. *Cancer Biol Ther*. 2016 Jul 2; 17(7):769-77. doi: 10.1080/15384047.2016.1192086. PubMed PMID: 27246906; PubMed Central PMCID: PMC4970534.

Pallis M, Burrows F, Ryan J, Grundy M, Seedhouse C, Abdul-Aziz A, Montero J, Letai A, Russell N. Complementary dynamic BH3 profiles predict co-operativity between the multi-kinase inhibitor TG02 and the BH3 mimetic ABT-199 in acute myeloid leukaemia cells. *Oncotarget*. 2017 Mar 7;8(10):16220-16232. doi: 10.18632/oncotarget.8742. PubMed PMID: 27092880; PubMed Central PMCID: PMC5369958.

Bashari MH, Fan F, Vallet S, Sattler M, Arn M, Luckner-Minden C, Schulze-Bergkamen H, Zörnig I, Marme F, Schneeweiss A, Cardone MH, Opferman JT, Jäger D, Podar K. Mcl-1 confers protection of Her2-positive breast cancer cells to hypoxia: therapeutic implications. *Breast Cancer Res*. 2016 Feb 26;18(1):26. doi: 10.1186/s13058-016-0686-4. PubMed PMID: 26921175; PubMed Central PMCID: PMC4769490.

Inhibitor · Natural Compounds · Compound Libraries · Recombinant Proteins

This product is for Research Use Only · Not for Human or Veterinary or Therapeutic Use

Tel:781-999-4286 E_mail:info@targetmol.com Address:34 Washington Street,Wellesley Hills,MA 02481