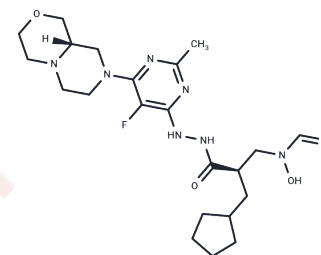


Lanopepden

Chemical Properties

CAS No. :	1152107-25-9
Formula:	C ₂₂ H ₃₄ N ₂ O ₄
Molecular Weight:	479.55
Storage:	Powder: -20°C for 3 years In solvent: -80°C for 1 year Actual storage temperature shall be subject to the COA.



Biological Description

Description	Lanopepden (GSK 1322322) is a potent peptide deformylase inhibitor effective against Staphylococcus aureus strains ATCC 29213 and ATCC 25923, and is applicable in the study of pneumonia, dermatological, and infectious diseases.
Targets(IC50)	Antibacterial, Antibiotic

Solubility Information

Solubility	DMSO: 20 mg/mL (41.71 mM), Sonication is recommended. (< 1 mg/ml refers to the product slightly soluble or insoluble)
In vivo Formulation	10% DMSO+90% Corn Oil: 2 mg/mL (4.17 mM), Sonication is recommended. <i>Please add the solvents sequentially, clarifying the solution as much as possible before adding the next one. Dissolve by heating and/or sonication if necessary. Working solution is recommended to be prepared and used immediately. The formulation provided above is for reference purposes only. In vivo formulations may vary and should be modified based on specific experimental conditions.</i>

Preparing Stock Solutions

	1mg	5mg	10mg
1 mM	2.0853 mL	10.4264 mL	20.8529 mL
5 mM	0.4171 mL	2.0853 mL	4.1706 mL
10 mM	0.2085 mL	1.0426 mL	2.0853 mL
50 mM	0.0417 mL	0.2085 mL	0.4171 mL

Please select the appropriate solvent to prepare the stock solution, according to the solubility of the product in different solvents. Please use it as soon as possible.

Note: The dilution table applies only to solid products. For liquid products, please calculate the stock solution based on the stated concentration and/or density.

Reference

Peyrusson F, et al. Cellular pharmacokinetics and intracellular activity of the novel peptide deformylase inhibitor GSK1322322 against Staphylococcus aureus laboratory and clinical strains with various resistance phenotypes: studies with human THP-1 monocytes and J774 murine macrophages. Antimicrob Agents Chemother. 2015 Sep;59 (9):5747-60.

Inhibitor · Natural Compounds · Compound Libraries · Recombinant Proteins

This product is for Research Use Only · Not for Human or Veterinary or Therapeutic Use

Tel: 781-999-4286 E_mail: info@targetmol.com Address: 34 Washington Street, Wellesley Hills, MA 02481