

(±)-C3001a

Chemical Properties

CAS No. : 1374325-56-0

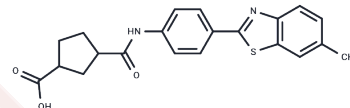
Formula: C₂₁H₂₀N₂O₃S

Molecular Weight: 380.46

Store at low temperature

Storage: Powder: -20°C for 3 years | In solvent: -80°C for 1 year

Actual storage temperature shall be subject to the COA.



Biological Description

Description	(±)-C3001a is the racemic mixture of C3001a (CAS: 2415154-29-7). C3001a is a selective activator of the TREK channel within the two-pore-domain potassium channel (K2P) family. C3001a specifically binds to a cryptic site formed by P1 and TM4 in TREK-1, thereby promoting the selective regulation of TREK-1 activity. C3001a targets TREK channels in the peripheral nervous system, reducing the excitability of pain-sensing neurons.
Targets(IC50)	Others,Potassium Channel

Preparing Stock Solutions

	1mg	5mg	10mg
1 mM	2.6284 mL	13.142 mL	26.284 mL
5 mM	0.5257 mL	2.6284 mL	5.2568 mL
10 mM	0.2628 mL	1.3142 mL	2.6284 mL
50 mM	0.0526 mL	0.2628 mL	0.5257 mL

Please select the appropriate solvent to prepare the stock solution, according to the solubility of the product in different solvents. Please use it as soon as possible.

Note: The dilution table applies only to solid products. For liquid products, please calculate the stock solution based on the stated concentration and/or density.

Inhibitor · Natural Compounds · Compound Libraries · Recombinant Proteins

This product is for Research Use Only · Not for Human or Veterinary or Therapeutic Use

Tel: 781-999-4286

E_mail: info@targetmol.com

Address: 34 Washington Street, Wellesley Hills, MA 02481