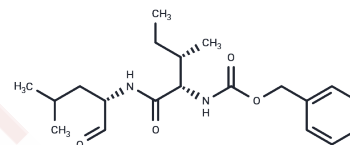


Z-Ile-Leu-aldehyde

Chemical Properties

CAS No. : 161710-10-7
 Formula: C₂₀H₃₀N₂O₄
 Molecular Weight: 362.46
 Storage: Powder: -20°C for 3 years | In solvent: -80°C for 1 year
 Actual storage temperature shall be subject to the COA.



Biological Description

Description	Z-Ile-Leu-aldehyde is an effective and competitive peptide aldehyde inhibitor of γ -secretase and notch.
Targets(IC50)	Apoptosis,Others,Gamma-secretase

Preparing Stock Solutions

	1mg	5mg	10mg
1 mM	2.7589 mL	13.7946 mL	27.5893 mL
5 mM	0.5518 mL	2.7589 mL	5.5179 mL
10 mM	0.2759 mL	1.3795 mL	2.7589 mL
50 mM	0.0552 mL	0.2759 mL	0.5518 mL

Please select the appropriate solvent to prepare the stock solution, according to the solubility of the product in different solvents. Please use it as soon as possible.

Note: The dilution table applies only to solid products. For liquid products, please calculate the stock solution based on the stated concentration and/or density.

Inhibitor · Natural Compounds · Compound Libraries · Recombinant Proteins

This product is for Research Use Only · Not for Human or Veterinary or Therapeutic Use

Tel:781-999-4286 E_mail:info@targetmol.com Address:34 Washington Street,Wellesley Hills,MA 02481