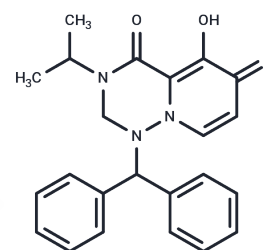


Cap-dependent endonuclease-IN-26

Chemical Properties

CAS No. :	1370238-26-8
Formula:	C ₂₃ H ₂₃ N ₃ O ₃
Molecular Weight:	389.45
Storage:	Powder: -20°C for 3 years In solvent: -80°C for 1 year Actual storage temperature shall be subject to the COA.



Biological Description

Description	Cap-dependent endonuclease-IN-26, a potent inhibitor of cap-dependent endonuclease (CEN) with an IC ₅₀ of 286 nM, exhibits significant antiviral activity against a broad spectrum of influenza A and B strains [1].
Targets(IC ₅₀)	Others, Influenza Virus
In vitro	Cap-dependent endonuclease-IN-26 (compound 2v) demonstrates a broad antiviral spectrum effective against various influenza strains, including H1N1 (rgA/WSN/33, rgA/WSN/33-NA/H274Y, A/PR/8/34), H3N2 (A/Victoria/3/75, A/HongKong/8/68), oseltamivir-resistant, clinically isolated strains, and influenza B (Hong Kong/5/72, Maryland/1/59), with EC ₅₀ values of 165.1 nM, 80.4 nM, 183.0 nM, 828.8 nM, 301.5 nM, 124.3 nM, and 176.0 nM, respectively [1].
In vivo	In rats, Cap-dependent endonuclease-IN-26 (compound 2v) demonstrates favorable in vivo clearance rates at 10.9 mL/min/kg [1]. Administered intravenously at doses ranging from 0.08-10 mg/kg once daily for a day in a mouse influenza B (B/Maryland/1/59) model, compound 2v exhibits dose-dependent efficacy in an immediate treatment scenario [1].

Preparing Stock Solutions

	1mg	5mg	10mg
1 mM	2.5677 mL	12.8386 mL	25.6772 mL
5 mM	0.5135 mL	2.5677 mL	5.1354 mL
10 mM	0.2568 mL	1.2839 mL	2.5677 mL
50 mM	0.0514 mL	0.2568 mL	0.5135 mL

Please select the appropriate solvent to prepare the stock solution, according to the solubility of the product in different solvents. Please use it as soon as possible.

Note: The dilution table applies only to solid products. For liquid products, please calculate the stock solution based on the stated concentration and/or density.

Inhibitor · Natural Compounds · Compound Libraries · Recombinant Proteins

This product is for Research Use Only · Not for Human or Veterinary or Therapeutic Use

Tel:781-999-4286 E_mail:info@targetmol.com Address:34 Washington Street,Wellesley Hills,MA 02481