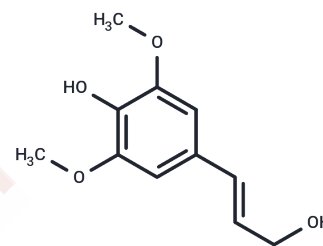


Sinapyl alcohol

Chemical Properties

CAS No. :	537-33-7
Formula:	C ₁₁ H ₁₄ O ₄
Molecular Weight:	210.23
Storage:	Keep away from moisture, Keep away from direct sunlight Powder: -20°C for 3 years In solvent: -80°C for 1 year <small>Actual storage temperature shall be subject to the COA.</small>



Biological Description

Description	Technical grade is a natural from Magnolia sieboldii
Targets(IC50)	NOS, COX
In vitro	Sinapyl alcohol more potently inhibited lipopolysaccharide (LPS)-induced nitric oxide (NO), prostaglandin E ₂ (PGE ₂), and tumor necrosis factor (TNF)- α production by macrophages than syringin. Consistent with these observations, the expression levels of inducible NO synthase (iNOS) and cyclooxygenase (COX)-2 was reduced by sinapyl alcohol in a concentration-dependent manner.
In vivo	Sinapyl alcohol (20,30mg/kg/day, p.o.) inhibited increased vascular permeability by acetic acid in mice and reduced acute paw edema by carrageenan in rats more so than syringin.

Solubility Information

Solubility	DMSO: 125 mg/mL (594.59 mM), Sonication is recommended. (< 1 mg/ml refers to the product slightly soluble or insoluble)
In vivo Formulation	10% DMSO+40% PEG300+5% Tween 80+45% Saline: 2 mg/mL (9.51 mM), Sonication is recommended. <i>Please add the solvents sequentially, clarifying the solution as much as possible before adding the next one. Dissolve by heating and/or sonication if necessary. Working solution is recommended to be prepared and used immediately. The formulation provided above is for reference purposes only. In vivo formulations may vary and should be modified based on specific experimental conditions.</i>

Preparing Stock Solutions

	1mg	5mg	10mg
1 mM	4.7567 mL	23.7835 mL	47.567 mL
5 mM	0.9513 mL	4.7567 mL	9.5134 mL
10 mM	0.4757 mL	2.3783 mL	4.7567 mL
50 mM	0.0951 mL	0.4757 mL	0.9513 mL

Please select the appropriate solvent to prepare the stock solution, according to the solubility of the product in different solvents. Please use it as soon as possible.

Note: The dilution table applies only to solid products. For liquid products, please calculate the stock solution based on the stated concentration and/or density.

Inhibitor · Natural Compounds · Compound Libraries · Recombinant Proteins

This product is for Research Use Only · Not for Human or Veterinary or Therapeutic Use

Tel:781-999-4286 E_mail:info@targetmol.com Address:34 Washington Street,Wellesley Hills,MA 02481